

Company Profile 2024

Designs by PMA



Completed and ongoing projects: **1500+**

CONTENTS

RESIDENTIAL SHOWCASE	10 18 26 30	HOUSE Z F1 VILLA D1 VILLA VILLA 47	Karas Region, Namibia Khomas Region, Namibia
COMMERCIAL PROJECTS	40 44 48 52 56 58 62 64 66 68 72 74 76	MINISTRY OF JUSTICE VF OFFICE DEVELOPMENT THE VILLAGE PLAZA UNAM WILDLIFE CAMPUS ROOF OF AFRICA ESTATE PUPKEWITZ LIFESTYLE UNAM SPORTS FACILITIES CONFUCUIS INSTITUTE UNAM ONGEDIWA İLAMO JEDIDJA SKI CABIN COMMERCIAL DEVELOPMENT	Lusaka, Zambia Windhoek, Namibia Kafra, Iceland
AI AND ARCHITECTURE	79	NAMIBIAN LANDSCAPES	
OTHER NOTABLE PROJECTS	87		
PORTFOLIO OF WORKS BY BUDGETS	109	NAMIBIAN & INTERNATIONAL	
THE LEAD DESIGNERS AT PMA	111	OUR DESIGN TEAM	
CONTACT	119	SIT DOWN WITH US	



FOREWORD

Pieter Mostert

Architecture has always been a discipline driven by the quest to innovate—an ongoing pursuit to design something new, something that hasn't been done before. However, it is essential to recognize that architects are not merely inventors; we are innovators. Our role is to reimagine and reinterpret the built environment, weaving together tradition and modernity, form and function, in ways that resonate both materially and spiritually.

Sir Norman Foster aptly remarked, "Architecture is rooted not only in the material needs of people, but also in the spiritual". This statement captures the dual nature of architecture in its capacity to meet tangible needs while also addressing the intangible, the emotional, and the spiritual.

For those who are passionate about design, architecture, or any related field, the phrase "Form follows function" by Louis Sullivan is likely well-known.

It has been a guiding principle for much of the last century, emphasizing the idea that a building's shape should be primarily based on its intended purpose.

In our practice at Pieter Mostert Architects, we have consciously challenged this notion, evolving our design philosophy into what we now refer to as the PMA-DNA. Through our work on various projects across the globe, we have explored the concept of "Function Follows Form." This approach suggests that form—often the more emotionally and visually engaging aspect of architecture—can lead and inspire the function. While function remains a critical component, we believe that form has the power to captivate and connect with people on a deeper level.

People are inherently more emotionally and visually engaged with the form of buildings than with their function. The shapes, textures, and spatial experiences created by a building's form leave lasting impressions,

influencing how we interact with and perceive the spaces around us. Yet, as architects, we carry the responsibility of merging these ideas of form with function, ensuring that while our designs captivate, they also serve their intended purposes effectively.

This philosophy of balancing form and function is at the heart of our work, driving us to create spaces that not only meet the material needs of those who inhabit them but also elevate their spirits. As you explore our work, you will journey through our projects, each a testament to our belief that architecture can be both innovative and deeply connected to the human experience. We invite you to engage with these ideas and consider how architecture can continue to evolve, always seeking to harmonize the material with the spiritual, the functional with the beautiful.

Pieter Mostert



INTRODUCTION

Our story

Pieter Mostert Architects (PMA) is a professional architecture firm with offices in both Mauritius and Namibia extending its global reach to projects worldwide. Encompassing luxury residential and large-scale commercial developments.

Established in 2002 by Pieter Mostert in the vibrant city of Windhoek, Namibia, PMA has steadily carved its niche in the architectural world. The firm's inception was driven by a vision to blend the natural beauty of Namibia's landscapes with innovative architectural design. Windhoek, nestled among rolling hills and expansive savannahs, provided a unique backdrop that influenced PMA's early projects. The city's harmonious blend of modernity and nature became a cornerstone of the firm's design philosophy.

Namibia's diverse landscapes, from the rugged Skeleton Coast to the serene Namib Desert, have been a constant source of inspiration for PMA. The

firm's designs often incorporate natural elements, emphasizing harmony with the environment. This approach not only enhances aesthetic appeal but also ensures that buildings are well-suited to their surroundings, creating seamless transitions between the built and natural environments.

Over the years, PMA has gained international recognition, establishing strong ties with the African Union of Architects and the Commonwealth Association of Architects. This recognition is a testament to the firm's commitment to excellence and innovation. With projects spanning Angola, Zambia, South Africa, Equatorial Guinea, and the United States, and enquiries reaching as far as Israel, Portugal, and France, PMA's global footprint continues to expand.

Throughout its journey, PMA has pioneered various developments and stayed at the forefront of architectural innovation. The firm has embraced the

evolving nature of architecture, integrating cutting-edge technology and sustainable practices into its projects. This commitment to innovation ensures that PMA remains a leader in the field, delivering designs that are not only aesthetically pleasing but also functional and forward-thinking.

PMA's portfolio includes several award-winning projects, showcasing the firm's leadership in architectural innovation in Namibia and beyond. These projects reflect the firm's dedication to quality, creativity, and client satisfaction. Each design is a testament to PMA's ability to blend artistic vision with practical functionality, resulting in structures that stand out for their elegance and efficiency.





HOUSE Z

Karasburg Region, Namibia

This home in Namibia’s Southern Region is positioned on top of a steep mountain ridge, offering 360-degree views of the Karas Region landscape. From this vantage point, one can take in the expansive Karas Mountains, which stretch far beyond the rolling desert. The house is embedded into the landscape, stretching three floors with multiple framed views that capture the breathtaking surroundings. A highlight of this architectural marvel is the swimming pool, which cantilevers over the edge of the mountain, creating the exhilarating sensation of swimming in the sky.

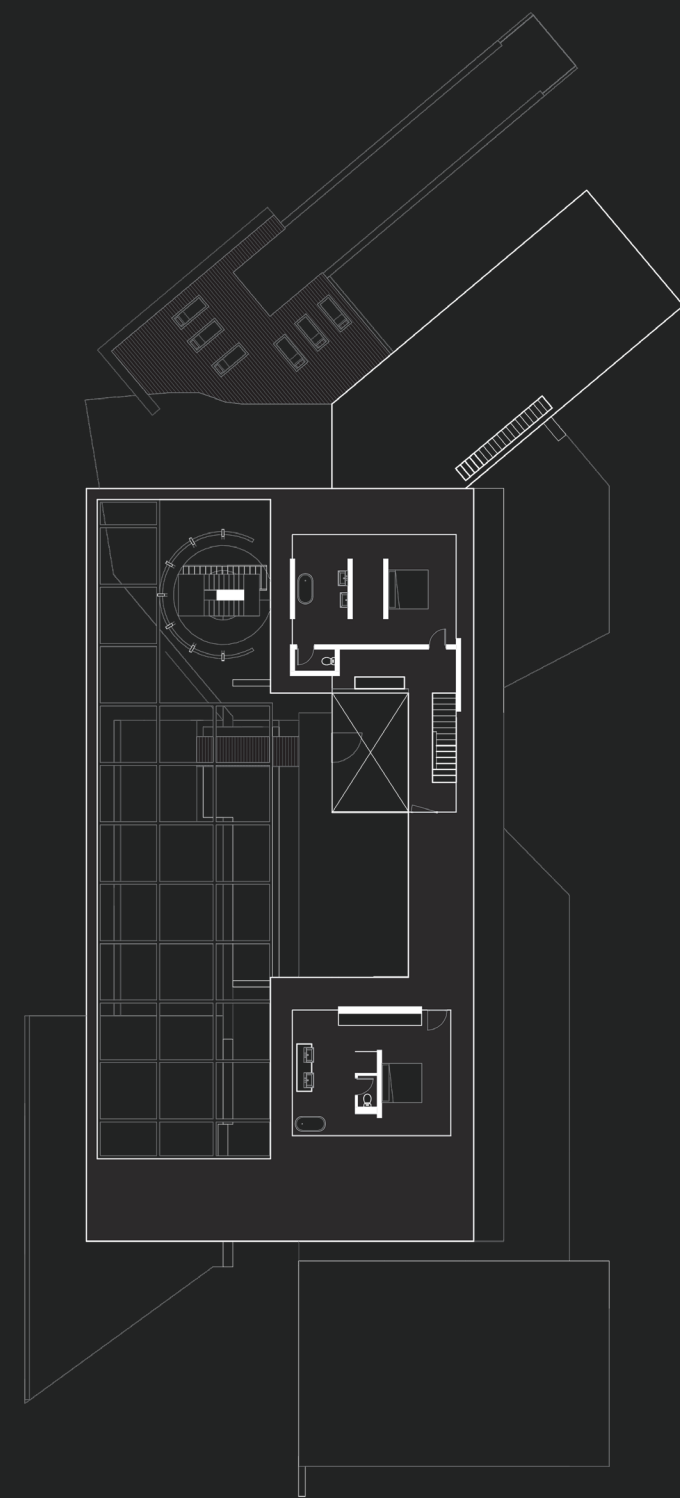
The materials used in the construction are a harmonious blend of rammed earth walls and concrete, with timber shading structures adding a touch of warmth and natural elegance. The rammed earth walls, with their rich, earthy tones, provide a visual connection to the desert landscape, while the concrete elements add a modern, sturdy feel to the structure. Timber shading structures not only enhance the aesthetic appeal but also offer practical benefits, protecting the interiors from the harsh desert sun.

Each floor of the house is designed to maximize the views and create a seamless connection between indoor and outdoor spaces. Large, strategically placed windows frame the landscape like art, allowing residents to feel as though they are part of the natural environment. The open-plan living areas are bathed in natural light, creating a warm and inviting atmosphere.

The integration of the house into the mountain ridge is a testament to the architectural prowess of PMA. The design not only respects the natural topography but also enhances it, making the house a part of

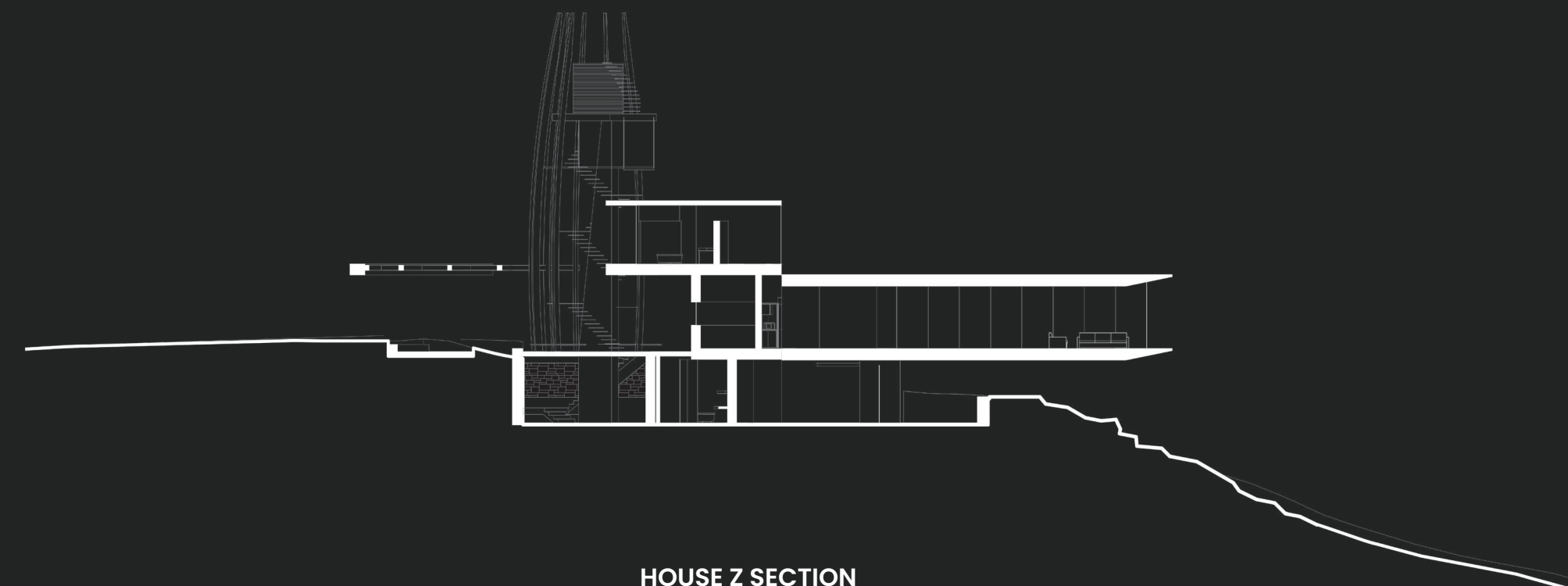
the landscape rather than an imposition upon it. The use of local materials and the thoughtful design ensure that the house blends seamlessly with its surroundings, offering a unique living experience that is both luxurious and deeply connected to nature.

This home is more than just a dwelling; it is a sanctuary that celebrates the beauty of the Karas Region. It exemplifiesPMA’scommitmentto creatingarchitecture that is inspired by and respectful of its environment, offering a perfect blend of luxury, comfort, and natural beauty.

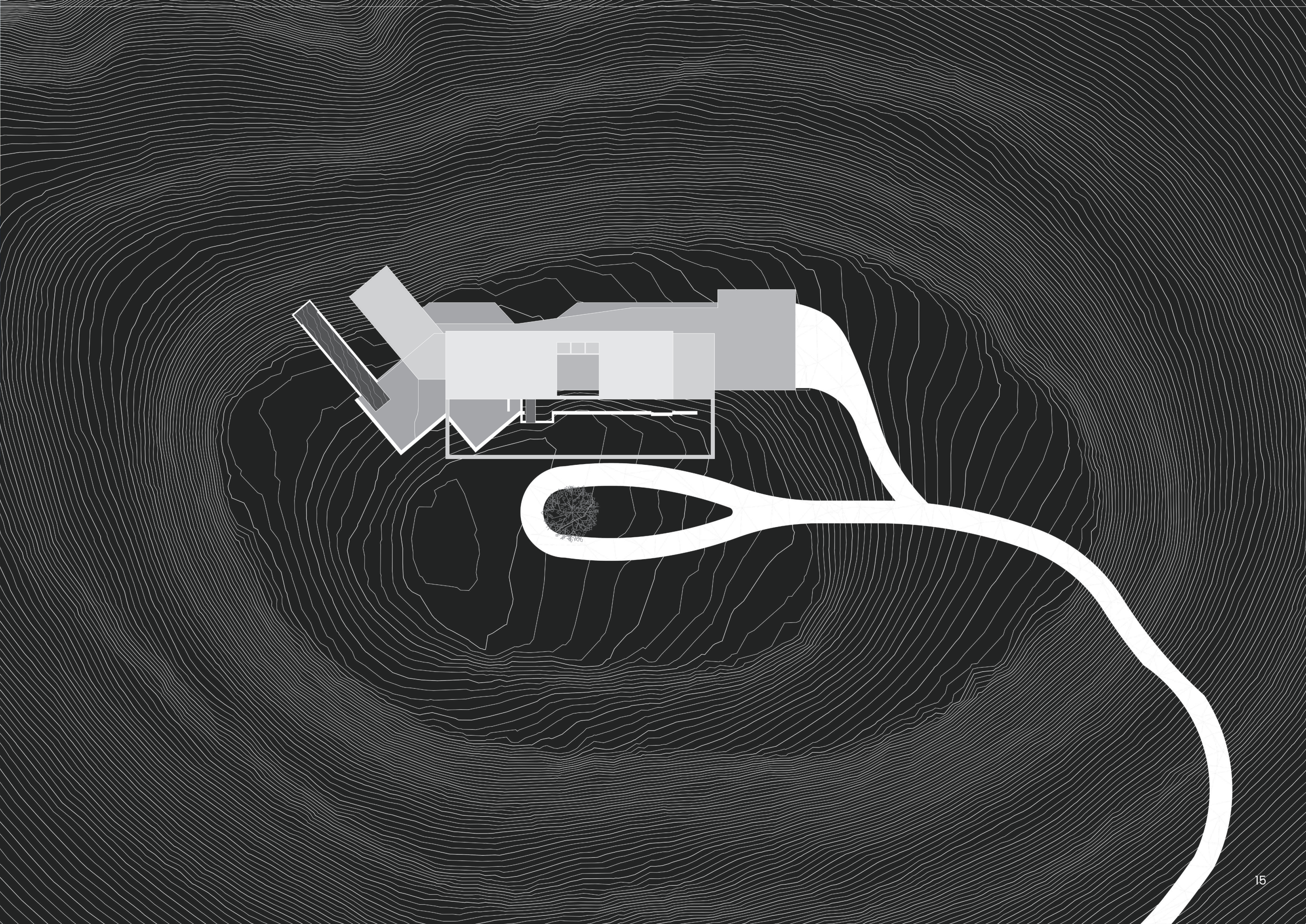


SECOND FLOOR PLAN





HOUSE Z SECTION







VILLA F1

Windhoek, Namibia

Perched dramatically on the sheer face of a rock cliff in Windhoek, this five-story residence is a striking fusion of architectural ingenuity and natural beauty. The home's design capitalizes on its elevated position, with four bedrooms and expansive living areas strategically placed atop a plateau, ensuring panoramic views of the cityscape and surrounding mountains. The outdoor deck, seamlessly integrated under a concrete roof, offers a meticulously framed vista that extends over an infinity pool, merging the boundary between the built environment and the skyline.

The site's steep slope, while challenging, was ingeniously transformed through the creation of garden terraces. These terraces soften the rugged terrain with lush greenery, providing both aesthetic and environmental benefits. A particularly distinctive feature of this residence is the cigar lounge, an intimate retreat crafted from off-shutter concrete. Designed to evoke the atmosphere of a

natural cave, the lounge offers a serene escape, with its framing of the outdoor view turning the adjacent trees and bushes into a living tableau. This home stands as a testament to the power of innovative architectural solutions, harmonizing luxurious living spaces with the dramatic natural environment, and showcasing how modern design can both respect and enhance its surroundings.



F1 VILLA SECTION

FRAMING NATURE

Framing views is a fundamental aspect of architectural design that significantly enhances the connection between a building and its surroundings. This practice involves strategically positioning architectural elements to capture and emphasize specific vistas, whether they are of natural landscapes or urban environments. By doing so, architects create visually engaging spaces that enrich the occupant's experience and foster a deeper appreciation of the environment.

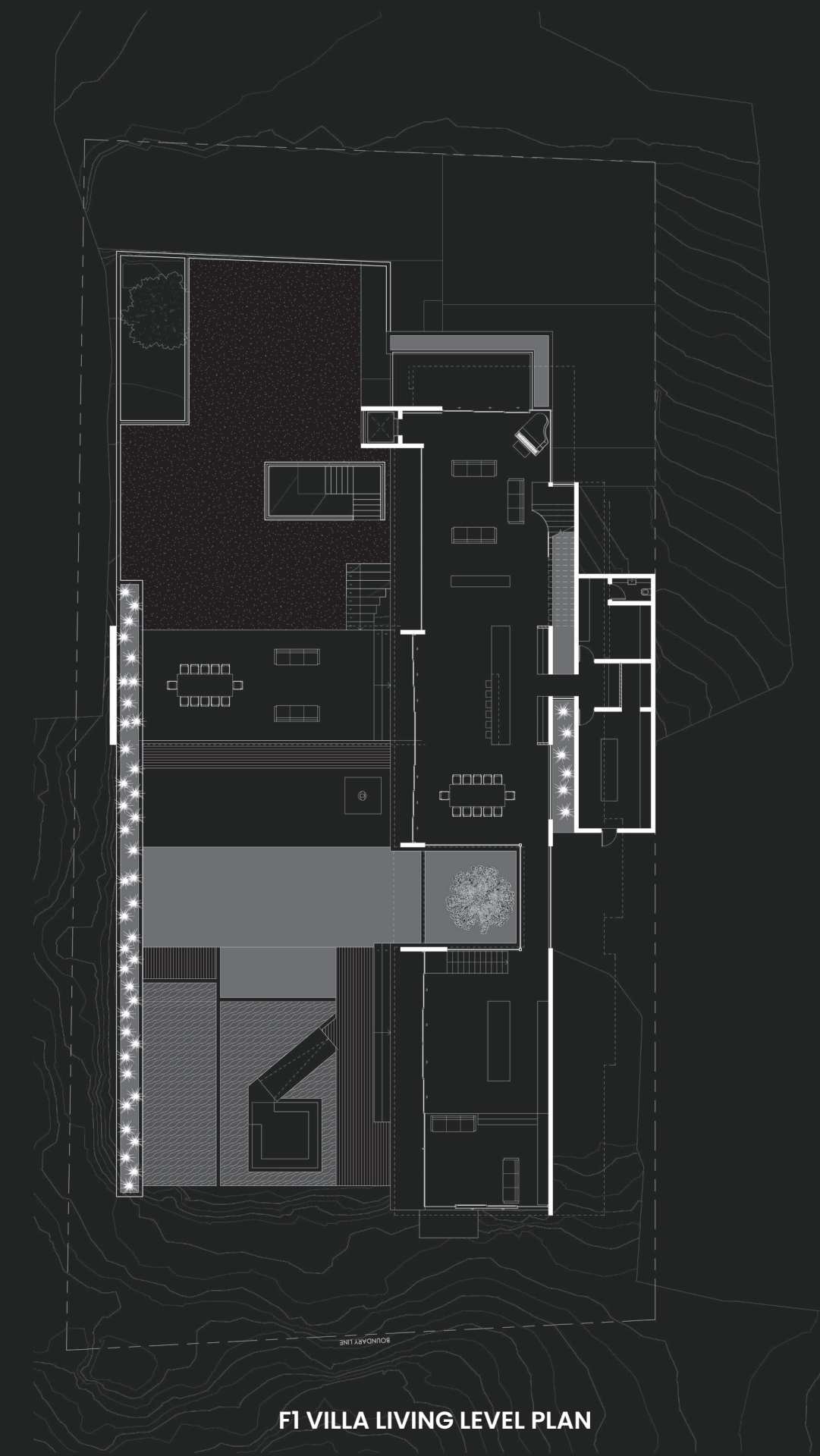
The benefits of framing views extend beyond aesthetics and emotional impact. Thoughtfully designed vistas can improve natural lighting and ventilation, contributing to the building's energy efficiency and sustainability. Additionally, these framed views can enhance the functionality of spaces, providing focal points that guide the layout and use of interior areas.

Architects often employ various elements to frame

views effectively. Picture windows, for instance, create a clear and uninterrupted visual connection to the outside. Courtyards and atriums can serve as internal framing devices, bringing elements of nature into the heart of the building. In residential design, features like pergolas, trellises, and overhangs can frame outdoor views while providing shade and protection from the elements.

The strategic use of architectural elements to frame views towards nature and the city is a powerful tool that can transform buildings into dynamic and engaging spaces. By drawing inspiration from masters like Frank Lloyd Wright and Tadao Ando, contemporary architects continue to explore innovative ways to connect occupants with their surroundings. Whether enhancing natural beauty or capturing urban vitality, framing views enriches the architectural experience, creating spaces that are both visually captivating and deeply meaningful.





F1 VILLA LIVING LEVEL PLAN

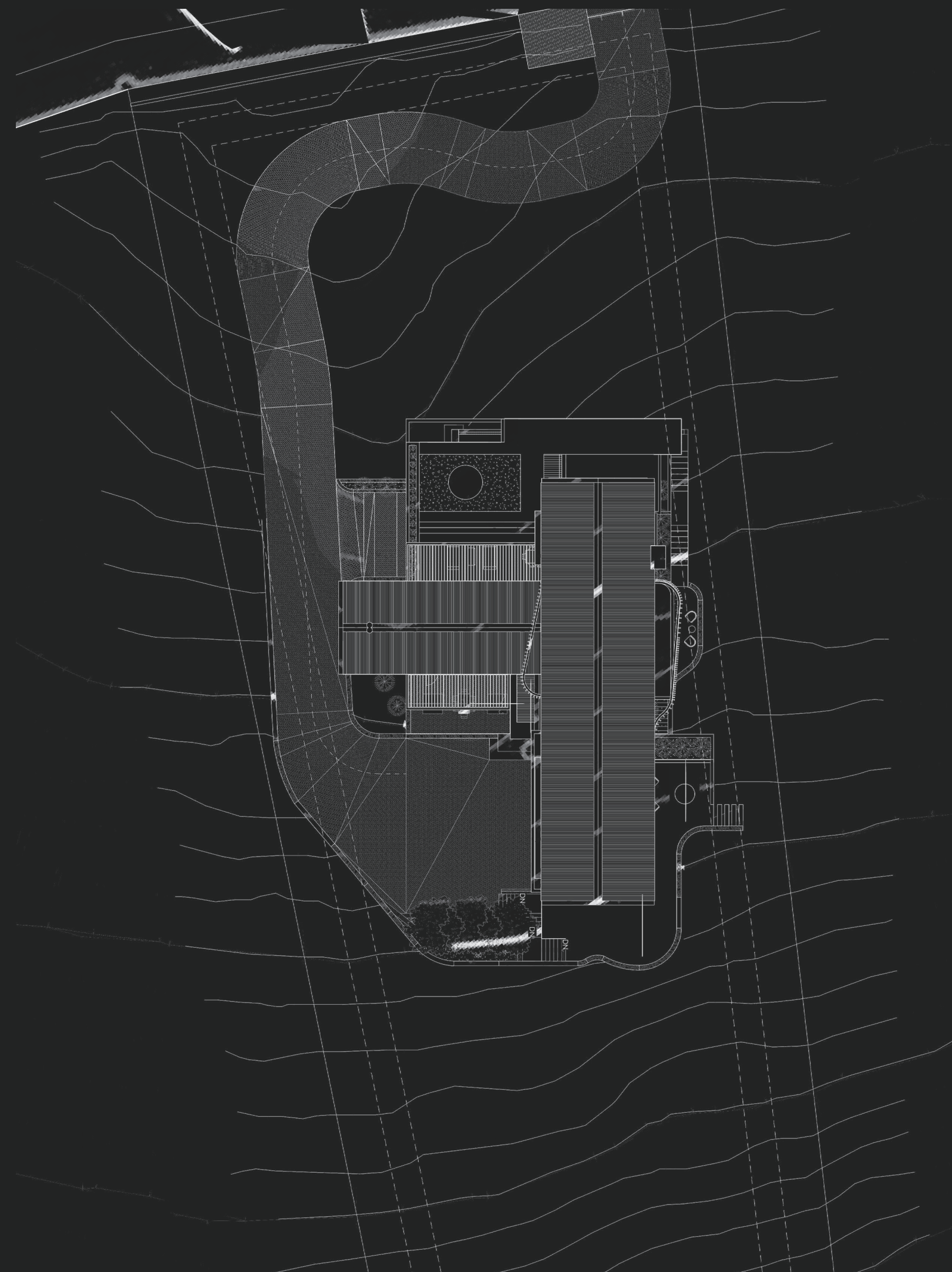


D1 VILLA

Windhoek, Namibia

This family residence, strategically positioned on a slope within the Avasblick Valley, exemplifies a thoughtful approach to site-sensitive design. The architectural concept embraces the natural contours of the landscape, with the structure's massing intentionally articulated into two stacked wings. This vertical organization not only minimizes the building's footprint but also frames unobstructed views of the Khomas Hochland peaks, offering a connection to the surrounding environment. The design incorporates a series of terraces and viewing platforms that punctuate the residence, each crafted to offer varying degrees of privacy and intimacy, seamlessly blending indoor and outdoor spaces. The exterior façade, with its interplay of solid and void, stone, and glass, is designed to reflect the rugged beauty of the Namibian landscape, creating a residence that is both

a refuge and a platform for experiencing the natural world. This design approach not only enhances the living experience for its residents but also establishes a visual dialogue between the built environment and the vast, sweeping vistas of Windhoek's mountainous terrain.



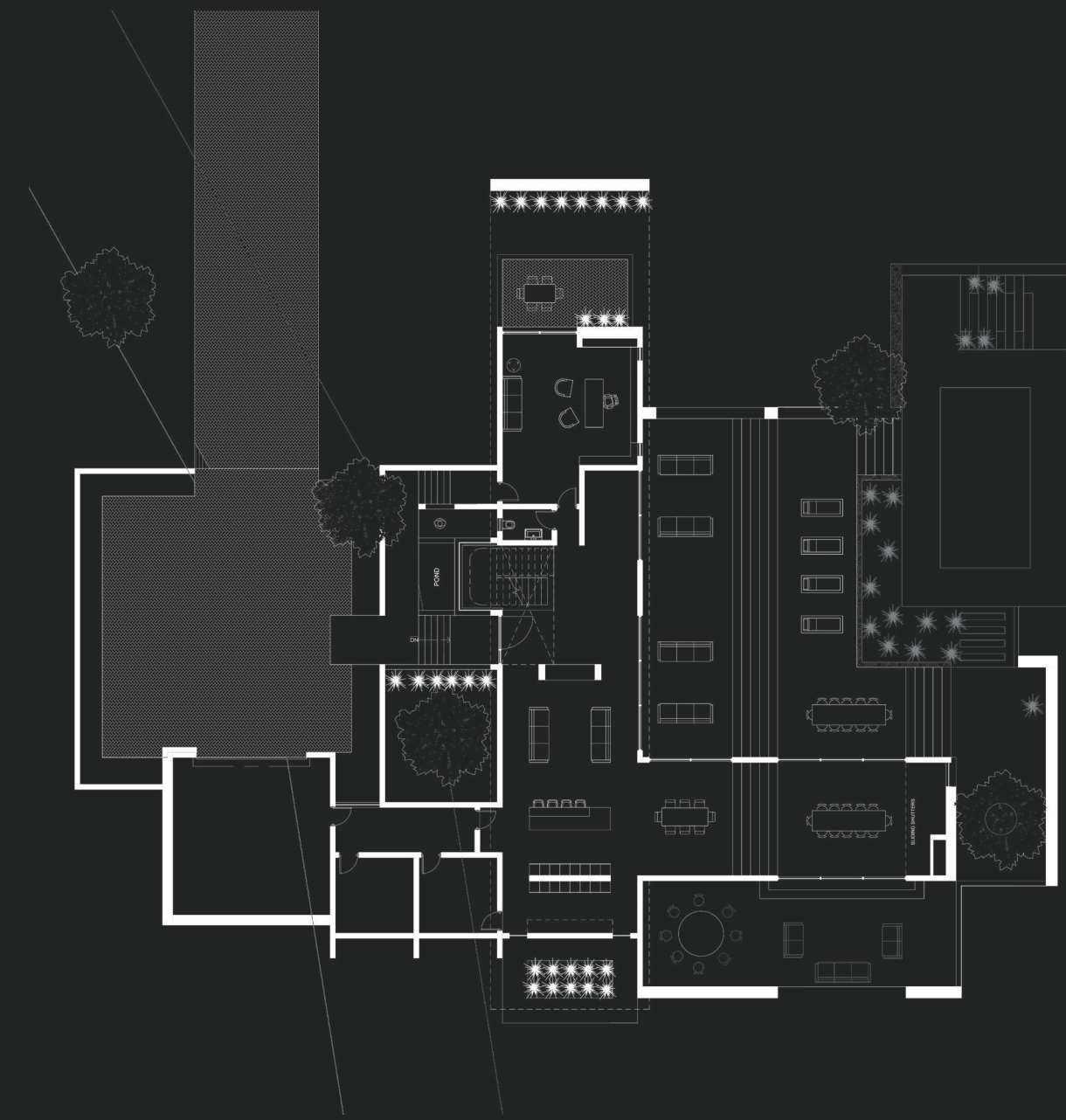


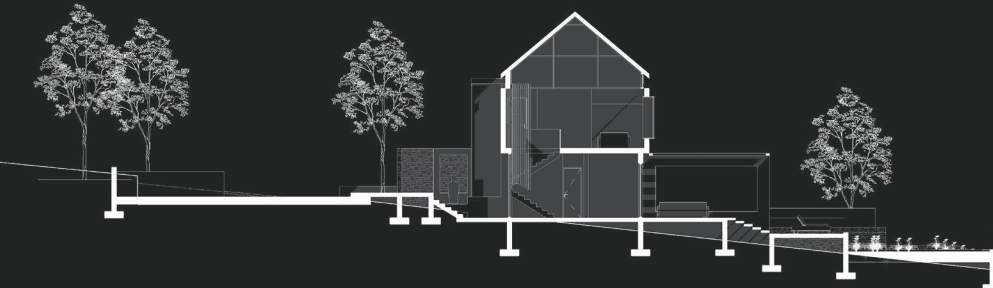
VILLA 47

Khomas Hochland, Namibia

This family home is positioned on a slope in the Ausasblick Valley. With views of the surrounding Khomas Hochland peaks overlooking the rooftops of Avis, a residential extension in the capital city of Windhoek.

The building's exterior was intentionally designed to elegantly stack two wings of the structure's massing atop the landscape, framing views of the surrounding mountains and valley. This design harmoniously integrates natural elements, creating secluded pockets and viewing platforms throughout the residence based on levels of privacy and intimacy for its residents.





LIVING TO THE OUTDOORS IN NAMIBIA

Central Namibia, characterized by a semi-arid climate, offers a moderate temperature range with warm days and cool nights, making it ideal for integrating indoor and outdoor spaces. The abundance of sunshine, coupled with low humidity, creates a comfortable environment for outdoor activities throughout most of the year. Architectural designs can capitalize on this by incorporating large, operable windows and sliding doors that blur the boundary between interior and exterior spaces, facilitating natural ventilation and minimizing the need for mechanical cooling.

In this context, the climate supports the use of shaded verandas, courtyards, and terraces that offer protection from the sun while encouraging interaction with the natural surroundings. These design elements not only enhance the living experience by fostering a connection with nature but also contribute to energy efficiency by reducing reliance on artificial lighting and cooling. The orientation of buildings to maximize solar gain during cooler months and provide shade during hotter periods is another crucial consideration. Furthermore, the integration of local materials such as stone and timber can enhance thermal comfort while blending the architecture seamlessly with the landscape, making the home a true extension of its environment.



VILLA
47 | WINDHOEK,
NAMIBIA



ATTORNEY
GENERAL | WINDHOEK,
NAMIBIA

COMMERCIAL
& PUBLIC
PROJECTS



Internationally

Over the last two decades, Pieter Mostert Architects has led an extensive array of commercial projects, encompassing a wide spectrum of typologies. Our portfolio includes the design and execution of government buildings, schools, hotels, business parks, international high commissions, airport plane hangars, prisons, and university campuses. Each of these projects has presented unique challenges and opportunities, allowing us to refine our approach to commercial architecture and deepen our understanding of the complex requirements that such projects entail.

The nature of commercial work demands a high level of adaptability and expertise. Architects must navigate a multitude of factors, including functionality, sustainability, security, and aesthetics, all while adhering to stringent timelines and budget constraints. Our experience in leading large-scale projects has equipped us with the skills necessary to manage these complexities effectively. Additionally, the need to balance the diverse needs of stakeholders—from government entities to private enterprises—has honed our ability to deliver designs that are not only innovative but also responsive to the specific demands of each project.

Confidentiality is often a critical component of our commercial projects, particularly those involving

government facilities, high-security institutions, and international entities. While we are frequently bound by confidentiality agreements that limit our ability to share detailed information or drawings, we remain committed to transparency within the bounds of these agreements. We take pride in our ability to discuss the broader aspects of these projects and to showcase the designs in our portfolio, providing insights into our design process and the architectural solutions we have developed.

Engaging in commercial work is not just a business endeavor for us; it is an integral part of our mission as architects to contribute meaningfully to the built environment. Commercial projects often serve as the backbone of urban development, shaping the infrastructure and spaces that support economic growth and social interaction. Through our work on government buildings, educational institutions, and other commercial structures, we have gained invaluable knowledge and experience that informs all aspects of our practice. This expertise allows us to approach each new project with confidence, knowing that we have the capacity to deliver solutions that meet the highest standards of quality and functionality.

Moreover, our commitment to commercial architecture has reinforced our belief in the importance of creating

spaces that serve the public good. Whether designing a university campus that fosters learning and community or a government building that embodies the values of transparency and accessibility, we recognize the profound impact that architecture can have on society. As we continue to take on diverse commercial projects, we are guided by the principles of excellence, innovation, and responsibility, striving to create buildings that not only fulfill their immediate purpose but also contribute to the broader goals of sustainable and inclusive development.



MINISTRY OF JUSTICE

Windhoek, Namibia

Our work on CBD regeneration in Windhoek has been centered around Independence Avenue and Post Street, with a focus on revitalizing these key areas. The Justitia Building, our first project in this initiative, is set to undergo a transformative renovation, with completely overhauled interiors and facades. This project marks the beginning of a new era for these streets, breathing new life into the heart of Windhoek and setting a high standard for future developments in the area.

The design of the Ministry of Justice building is crucial in this urban revival, as it serves as a symbol of transparency, accessibility, and the rule of law within the city. By integrating modern architectural elements with functional spaces, the building not only caters to the needs of its occupants but also reflects the ideals of justice—clarity, balance, and fairness. The use of natural light through expansive glass facades fosters an environment of openness, while the thoughtful incorporation of local materials and textures roots the building within the Namibian context.

This design is not just about aesthetics; it's about creating a civic space that embodies the principles of democracy and governance. The architectural language employed in the Ministry of Justice reinforces the building's role as a pillar of society, ensuring it stands as a landmark within the CBD regeneration project. The careful planning of public spaces around the building encourages civic engagement, making it a vital component of the city's urban fabric.

Moreover, the building's design anticipates future needs, with flexible interiors that can adapt to the evolving demands of the justice system. This foresight ensures the Ministry of Justice remains a relevant and functional part of the city for years to come. In revitalizing this area, the project demonstrates the potential for architecture to contribute meaningfully to urban development, creating spaces that not only serve their immediate purpose but also enhance the broader social and cultural landscape.



AN APPROACH TO URBAN REVIVAL

Ministry of Justice, Namibia

Our approach to urban revival begins with a bold new design for the Ministry of Justice, setting a precedent for revitalizing key civic spaces. This project is more than a building; it's a symbol of renewal and progress. By integrating modern architectural elements with the historical context of the city, we aim to create a landmark that embodies transparency, justice, and community.

The design features expansive glass facades to foster a sense of openness and accessibility, while public plazas and green spaces invite citizens to engage with their surroundings. This innovative approach not only revitalizes the urban fabric but also redefines the role of civic architecture in promoting social cohesion and public trust.





VF OFFICE DEVELOPMENT

Lusaka, Zambia

A high-end commercial office space in Lusaka that embodies our design philosophy. The building features a thoughtful composition of materials, including timber slats that provide both privacy and a tactile richness to the exterior. Inside, the reception area is distinguished by wavy timber members on the ceiling, creating a dynamic visual impact. The use of stone on the ground floor walls anchors the structure, while the juxtaposition of timber and glass on the upper levels adds a contemporary touch. This project exemplifies our commitment to creating spaces that are not only visually compelling but also functional and harmonious with their surroundings.

The design concept emphasizes a blend of natural elements with modern architectural features, creating an inviting and inspiring work environment. The interior spaces are designed to maximize natural light and ventilation, enhancing the well-being of occupants. Additionally, the layout promotes

collaboration and productivity, with open-plan work areas complemented by private meeting rooms and breakout spaces. The use of sustainable materials and energy-efficient design strategies further underscores our commitment to environmentally responsible architecture. This office development sets a new standard for contemporary workplace design in Zambia, reflecting our dedication to excellence in architecture.



A BIOPHILIC APPROACH TO WORKPLACE DESIGN

Incorporating biophilic design elements within office environments is a strategic approach that enhances both the aesthetic appeal and functional productivity of the space. Biophilic design integrates natural elements—such as greenery, natural light, and organic materials—into the built environment, fostering a connection between occupants and the natural world. This connection is not merely visual; it engages multiple senses, creating a calming and inspiring atmosphere that can significantly improve cognitive function and creativity. Studies have shown that exposure to natural elements can reduce stress, increase focus, and elevate mood, all of which contribute to higher productivity levels among employees.

Moreover, the aesthetic benefits of biophilic design go hand in hand with its functional advantages. The presence of plants, natural light, and views of nature within an office space can create a more pleasant and engaging work environment, which can lead to increased employee satisfaction and retention. The organic forms and textures found in biophilic design contrast with the often rigid and artificial nature of traditional office environments, providing a sense of balance and harmony that resonates with the human psyche. In summary, biophilic design is not just an aesthetic choice; it is an evidence-based strategy that enhances well-being and productivity in the workplace.





THE VILLAGE PLAZA

Commercial Complex, Windhoek

The Village Plaza Lifestyle Complex represents a thoughtfully designed mixed-use development that seamlessly integrates a diverse range of functions within a single, cohesive environment. Strategically positioned, the complex is conceived to accommodate a hotel, an array of commercial enterprises, luxury residential units, dining establishments, and a shopping center. This holistic design approach fosters a vibrant urban community, where residents, visitors, and businesses benefit from the convenience and synergy of co-located amenities, thereby enhancing the overall urban experience.

The design of the Village Plaza Lifestyle Complex is characterized by several key architectural elements. A variety of residential units have been meticulously planned to cater to a broad demographic, ensuring inclusivity and adaptability to diverse lifestyles. The incorporation of underground parking not only optimizes the site's spatial efficiency but also

enhances accessibility and user convenience. The shopping center is carefully integrated into the broader development, serving as both a commercial and social hub that complements the luxurious residential and hospitality offerings. Collectively, these features contribute to the creation of a sophisticated, multi-functional space that embodies contemporary urban living.



A MULTI-FUNCTION BUSINESS PARK

Windhoek, Namibia

Business parks in Windhoek, Namibia, have become vital hubs for economic growth and urban development. Architecturally, these parks are designed to create a synergistic environment that fosters business collaboration and innovation.

By incorporating a variety of services such as hospitality, service, and commercial businesses, business parks offer a one-stop destination for enterprises and their clients. The integration of diverse facilities within a single location enhances convenience, reduces travel time, and promotes a dynamic business ecosystem.

For example, having hotels, restaurants, and conference facilities on-site supports the needs of traveling business professionals, while service-oriented businesses such as banks, gyms, and retail stores cater to the daily needs of employees and visitors. Commercial spaces within these parks provide opportunities for businesses to interact and collaborate, leading to increased productivity and economic activity.

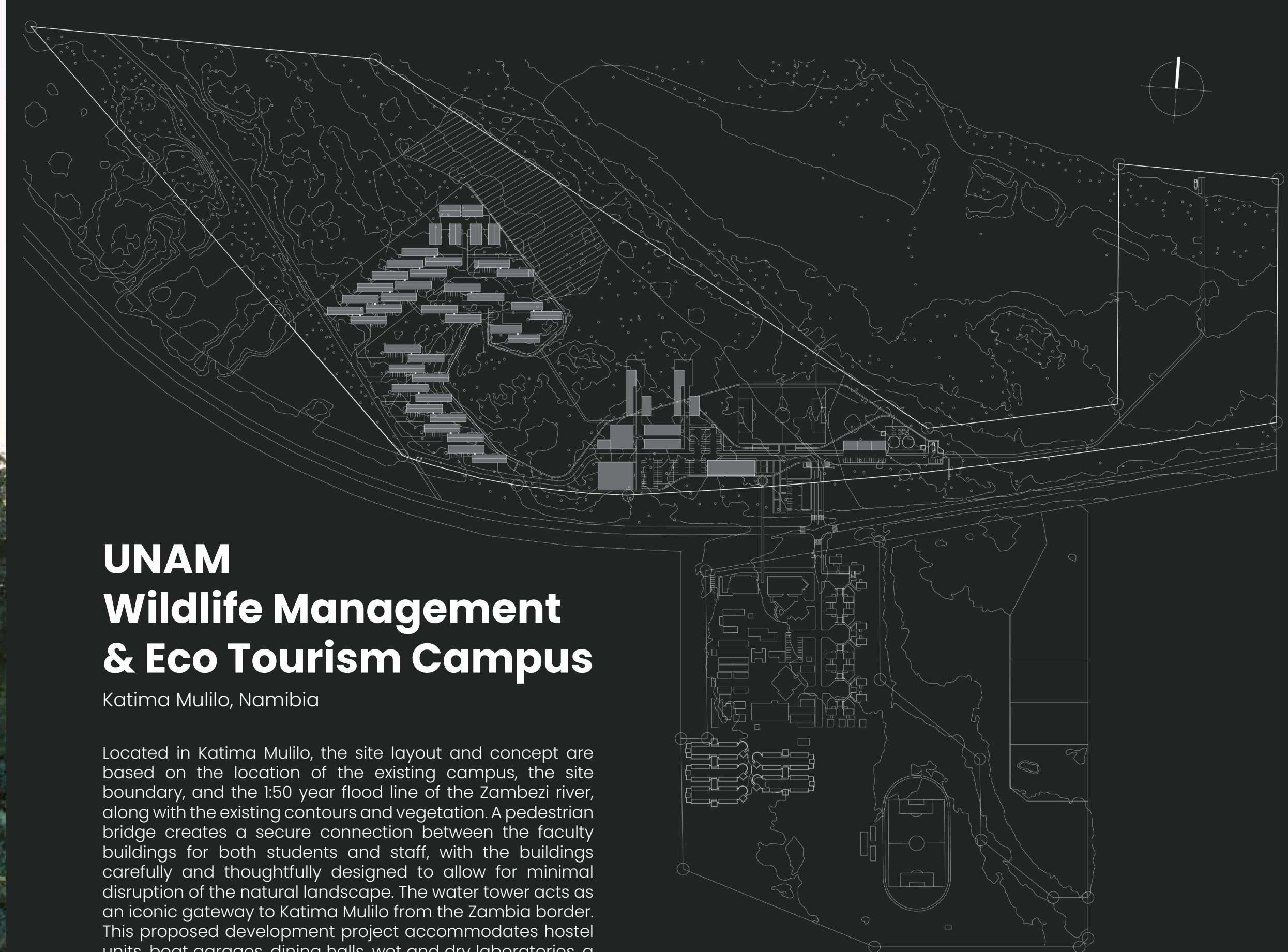




UNAM Wildlife Management & Eco Tourism Campus

Katima Mulilo, Namibia

Located in Katima Mulilo, the site layout and concept are based on the location of the existing campus, the site boundary, and the 1:50 year flood line of the Zambezi river, along with the existing contours and vegetation. A pedestrian bridge creates a secure connection between the faculty buildings for both students and staff, with the buildings carefully and thoughtfully designed to allow for minimal disruption of the natural landscape. The water tower acts as an iconic gateway to Katima Mulilo from the Zambia border. This proposed development project accommodates hostel units, boat garages, dining halls, wet and dry laboratories, a water treatment plant, sports fields, a multitude of lecture and seminar rooms, along with a museum, library and a multi-purpose hall.





AN EDUCATION IN CONSERVATION

The Katima Mulilo UNAM Wildlife Management & Eco Tourism Campus is strategically located in Namibia's Zambezi Region, a biodiversity hotspot that is home to diverse ecosystems and wildlife. This location provides students with immediate access to real-world conservation challenges and opportunities, making it an ideal setting for an education focused on wildlife management and ecotourism. The emphasis on conservation education is particularly crucial in Namibia, a country where the economy and livelihoods of many communities are closely linked to natural resources. Namibia's commitment to sustainable development and wildlife conservation is evident through its extensive network of conservancies and national parks, which rely on well-trained professionals to manage and protect these areas effectively.

The campus plays a critical role in equipping future conservationists and ecotourism managers with the skills needed to address the pressing environmental issues facing the region. By fostering a deep understanding of both the ecological and socio-economic aspects of conservation, the Katima Mulilo campus contributes to the sustainable development of Namibia and the broader Southern African region. The campus not only serves as an educational hub but also as a catalyst for research and community engagement, promoting the conservation of biodiversity and the responsible use of natural resources. In this context, the importance of conservation education at the Katima Mulilo campus cannot be overstated, as it directly supports Namibia's efforts to balance economic growth with environmental stewardship.





CANOPY HEIGHTS ESTATE

Windhoek, Namibia

This project is designed to seamlessly integrate a variety of commercial businesses, restaurants, and living units within a single, cohesive environment. A gym is also included in the development, offering residents and visitors a comprehensive lifestyle experience. The estate is conceived as a dynamic hub where business, leisure, and living intersect, creating a community-oriented space that enhances both convenience and quality of life.

One of the key architectural features of the Roof of Africa Lifestyle Estate is the use of timber canopy shading devices, which are thoughtfully integrated throughout the design. These canopies play a crucial role in cooling down open courtyards, making outdoor spaces more comfortable in Windhoek's warm climate. Additionally, the canopies are strategically placed to create inviting pockets of social interaction, encouraging residents and visitors to engage with the environment and each other. This design approach not only enhances the aesthetic appeal of the estate but also fosters a sense of community and connection within the development.



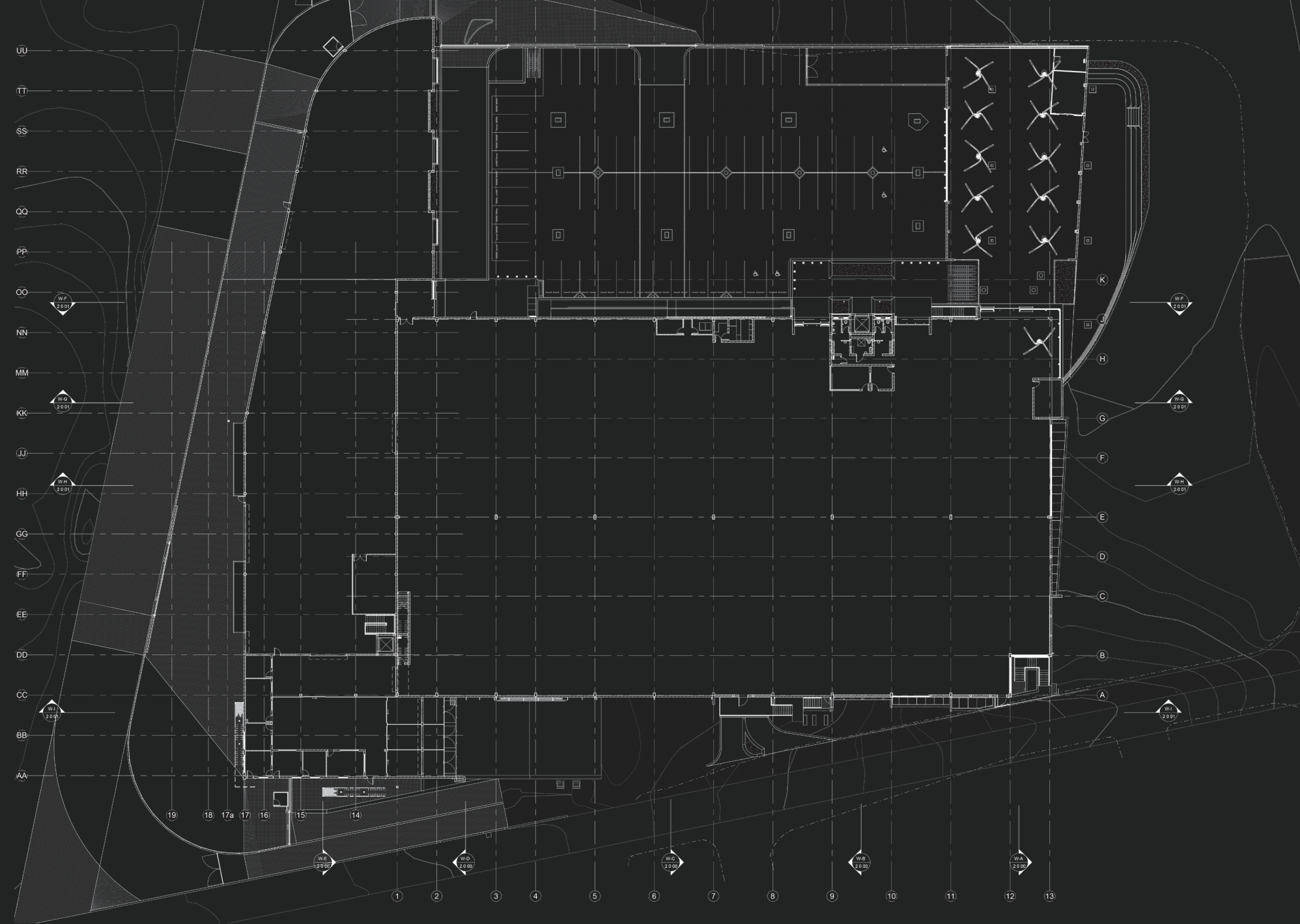


PUPKEWITZ MEGABUILD LIFESTYLE

Windhoek, Namibia

Pieter Mostert Architects is proud to partner with Pupkewitz Megabuild, a cornerstone in Namibia's commercial and personal development sector. With a legacy dating back to 1904, Pupkewitz Megabuild has consistently provided Namibians with the tools and materials necessary to turn visions into reality. Spanning over 19 branches across 16 towns, Pupkewitz Megabuild ensures accessibility for all, whether the project involves a simple home renovation, the construction of large-scale residential buildings, or even mining operations. Their commitment to service excellence is embodied by a knowledgeable team ready to offer expertise on over 20,000 line items, ensuring that every project, from foundation to roof, is fully supported.

The Pupkewitz Megabuild story began in 1904 when Max Pupkewitz opened a wagon-building shop in Okahandja, followed by a general dealership at Ausspahnplatz in 1925. His son, Harold Pupkewitz, expanded the family's vision by establishing the Pupkewitz Builders' Merchant in 1946, fostering an ethos of creating lasting impact



through quality and innovation. This vision culminated in the establishment of the Pupkewitz Builders Warehouse in 2007, a specialized building material shop in Katutura, Windhoek, offering comprehensive solutions tailored to the needs of builders.

Pupkewitz Megabuild has also demonstrated a strong commitment to Namibia's agricultural sector through Kaap Agri Namibia, which operates 21 branches across the country. Understanding the unique challenges of farming in Namibia, Kaap Agri Namibia has been a trusted partner to the agricultural community for over a decade, providing essential services and products from Grünau to Ondangwa.

In 2014, Pupkewitz Megabuild further solidified its leadership in the retail space with the launch of Megabuild Lifestyle in Windhoek. This premier retail outlet redefines the traditional hardware store experience by offering an innovative, sophisticated, and contemporary shopping environment. Catering to a wide range of needs, from gardening supplies to home appliances and the latest in home improvement trends, Megabuild Lifestyle stands as a testament to Pupkewitz Megabuild's ongoing commitment to inspiring fine living in Namibia.





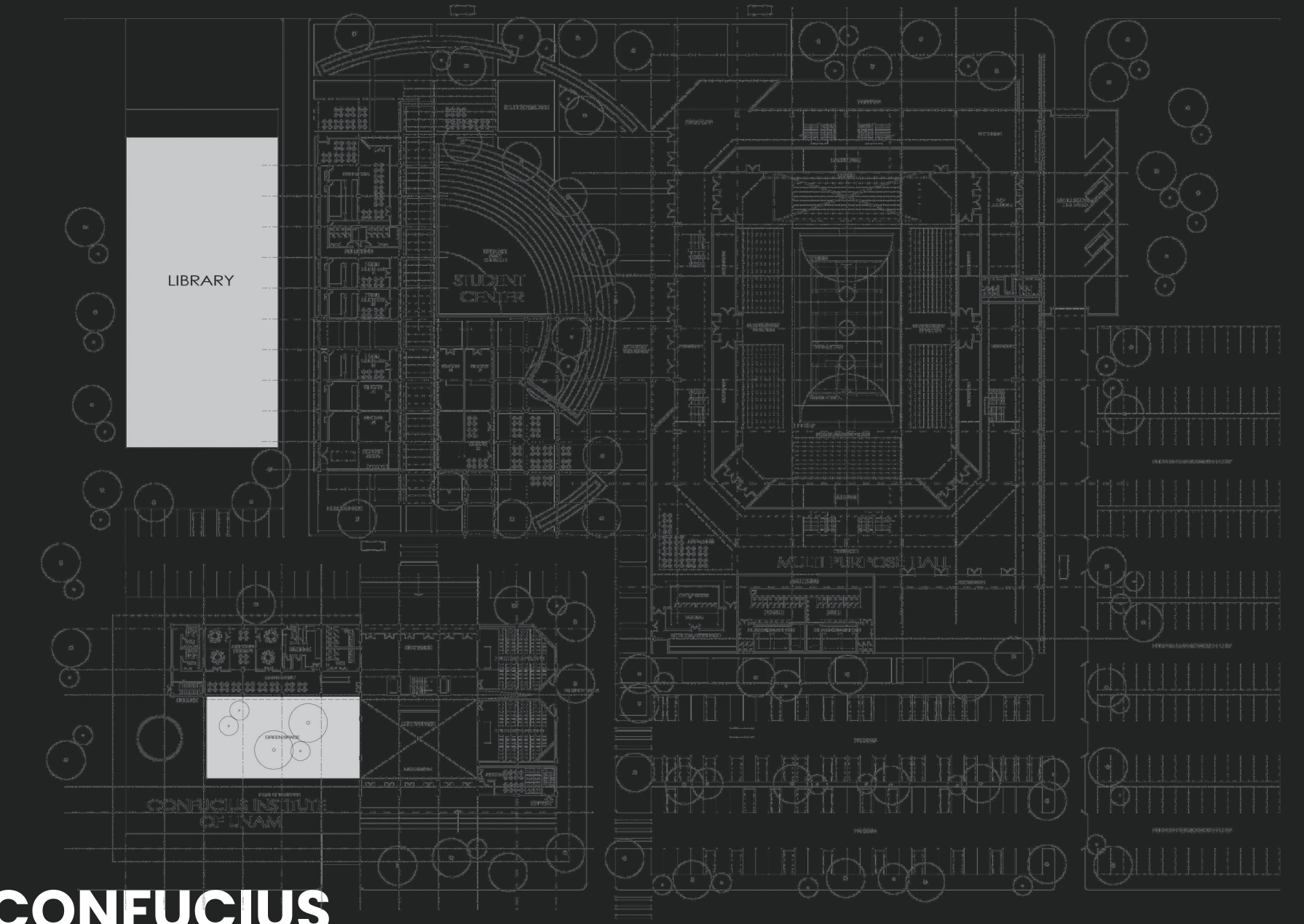
UNAM SPORTS FACILITIES

Windhoek, Namibia

The design proposal for UNAM's new sports facilities embodies a vision of modernity and versatility, centered around a state-of-the-art multi-functional sports hall. This hall is designed to accommodate a diverse range of sporting activities, from basketball and volleyball to indoor soccer and gymnastics, ensuring that the space meets the varied needs of the university's athletic programs. The architectural approach emphasizes a seamless integration of form and function, with the hall featuring high ceilings, optimized for acoustics and airflow, and expansive glazing that floods the interior with natural light, creating an energizing environment conducive to both training and competition.

The design also includes adaptable seating arrangements and retractable elements, allowing the space to transform easily for different events and audience sizes. Moreover, the facility's strategic orientation and use of sustainable materials ensure not only reduced energy consumption but also a strong visual connection to the surrounding campus, fostering a sense of community and school spirit. Through this innovative design, the sports hall stands as a testament to UNAM's commitment to providing cutting-edge athletic resources that support the physical and mental well-being of its students and staff.





CONFUCIUS INSTITUTE

Namibia

The UNAM Confucius Building is a beacon of cultural exchange and academic engagement, designed as a versatile space that reflects the fusion of tradition and innovation. This dynamic multi-functional exhibition and lecturing facility incorporates state-of-the-art technology, ensuring that it serves as both a hub for cultural activities and an advanced academic environment. The architecture of the building emphasizes flexibility, with spaces that can be easily adapted for various functions, including exhibitions, lectures, and cultural performances. The use of cutting-edge materials and construction

techniques not only enhances the building's sustainability but also creates an environment that is both aesthetically pleasing and highly functional. This design approach fosters a rich cultural dialogue while providing an inspiring setting for learning and interaction, positioning the UNAM Confucius Building as a landmark of educational and cultural significance.

UNAM ONGWEDIVA

Ongwediva, Namibia

Located in the heart of Namibia's northern regions, which together represent approximately 50% of the country's population, the José Eduardo dos Santos (JEDS) Campus serves as a key educational hub. Positioned in Ongwediva within the Oshana Region, around 720 km north of Windhoek, the campus is accessed via Nandjembo Mengela Street, off Mandume Ndemufayo Road.

The JEDS Campus is home to the School of Engineering & the Built Environment and is being developed in five phases. Once fully completed, the campus will accommodate approximately 1,000 engineering students at any given time. Currently, the Namibian Wing (Phase I), the Indian Wing (Phase II), and the German Wing (Phase III) are operational.

The campus offers specialized facilities across various engineering disciplines, including:

Civil and Environmental Engineering: Laboratories dedicated to geotechnical studies, transport systems, materials testing, hydrology, hydraulics, and water engineering, along with a dedicated library.

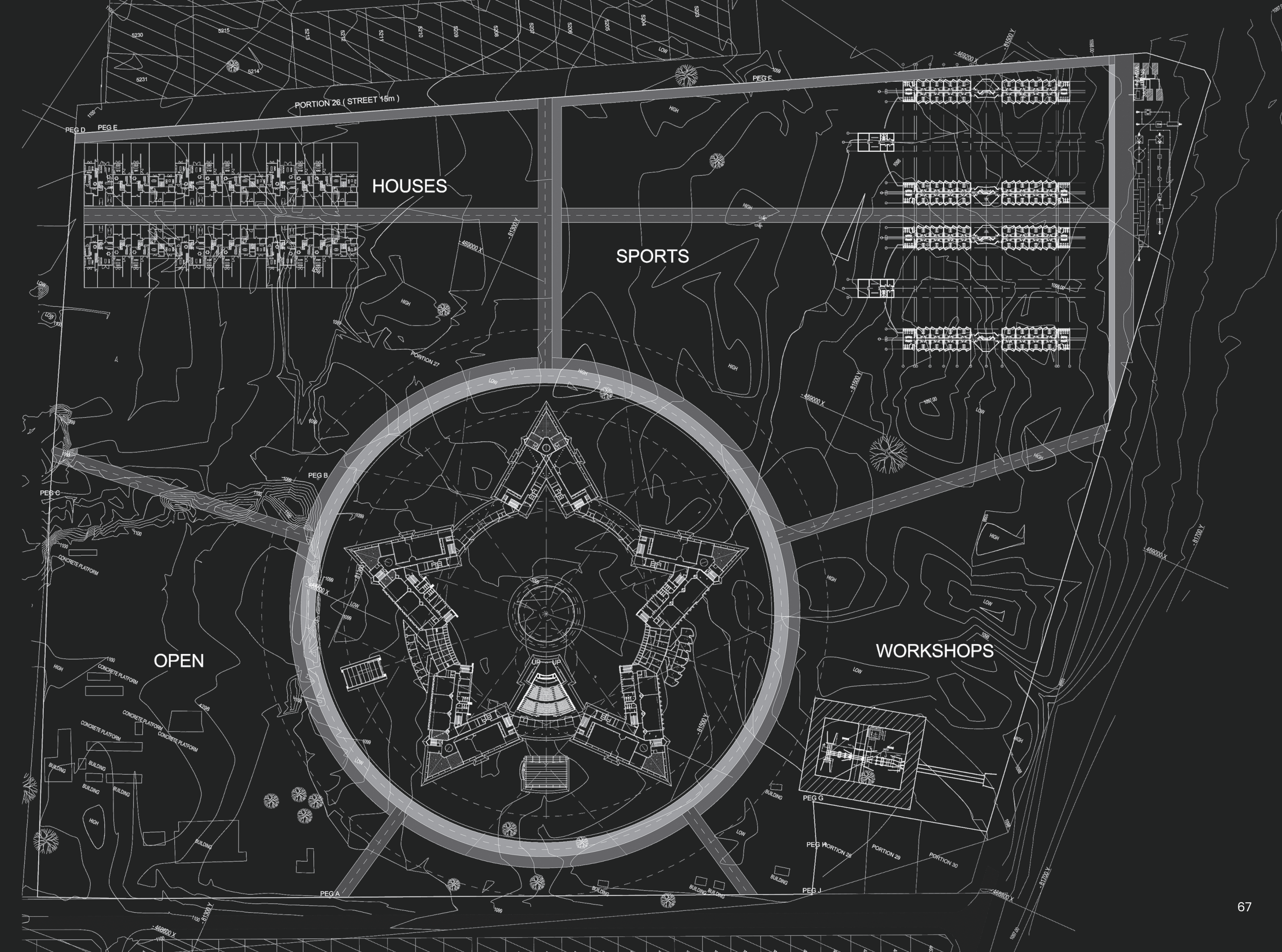
Electronics and Computer Engineering: Laboratories for electronics, software, and mobile communication engineering.

Electrical Engineering: Facilities include laboratories for power systems, light and high current studies, power electronics, and a mini sub-station donated by NamPower.

Mechanical and Industrial Engineering: Laboratories for engineering mechanics, thermo-fluids, manufacturing technology, control engineering, and CNC machinery.

Mining and Metallurgical Engineering: Laboratories focused on metallurgical processes, including optical microscopy, analytical methods, and non-destructive testing, with additional limited facilities for mining engineering.

The campus is also a leader in integrating Information and Communication Technology (ICT) into its operations and educational offerings. It boasts multiple computer labs with 24-hour internet access, supports advanced ICT training for all students, and provides widespread wireless internet connectivity. Access to buildings is managed through a computerized Biometric System. Additionally, the campus features modern lecture halls equipped with overhead projectors and video conferencing capabilities, enhancing the learning environment for all students.





iLAMO

Windhoek, Namibia

Nestled in the suburb of Klein Windhoek, PMA designed this building to house office spaces for financial services within the ground and first floor of the northern wing, with loft apartments resting atop. The North-West facing facade has been meticulously crafted to allow for permeability and natural light, whilst keeping out the heat from Namibia's interior.

Mixed-use buildings that blend office space with residential units are crucial in Namibia due to rapid urbanization and population growth. These developments optimize land use by combining functions, easing traffic congestion and reducing environmental impact. They also stimulate economic growth, create vibrant communities, and revitalize urban areas. By encouraging social interaction and sustainability through reduced car reliance, mixed-use buildings contribute to creating vibrant, sustainable, and economically robust cities in Namibia.







JEDIDJA COMPLEX

Windhoek, Namibia

This condominium complex, located in the prestigious Kleine Kuppe district of Windhoek, exemplifies modern urban living with its combination of office spaces and luxurious residential units. The complex offers a range of upmarket apartments, including 1, 2, and 3-bedroom options, each designed to maximize comfort and convenience. The architecture thoughtfully frames the units to offer residents breathtaking views over the veld and the city skyline, creating a harmonious blend of urban sophistication and natural beauty. This design approach not only enhances the living experience but also positions the complex as a prime destination for those seeking both professional and residential excellence in one location.





HALLI SKI CABIN

Krafla, Iceland

Imagine a mountain of snow and reflective ice, a shimmering oasis amidst the Icelandic wilderness, opening its arms to welcome the skiing community. It is the earth itself rising to provide warmth and shelter.

This sanctuary, a haven in the frosty expanse, welcomes skiers with a tactile embrace, inviting them to test their mettle before conquering the surrounding trails. Halli becomes the experience, where the natural world and human ingenuity entwine in the winter months surrounding Krafla.

Within its protective shell, skiers find respite and rejuvenation. Here, the sleek lines of the structure blend seamlessly with the undulating landscape, creating a harmonious interaction between architecture and nature.

The structure's massing, with its gently sloping roof, doubles as a practice slope, allowing users to immerse themselves in the snowy terrain before venturing out. Halli is not just a building; it is an integral part of the landscape, reflecting the beauty and tranquility of the Icelandic wilderness while providing a warm and inviting refuge for all who enter.



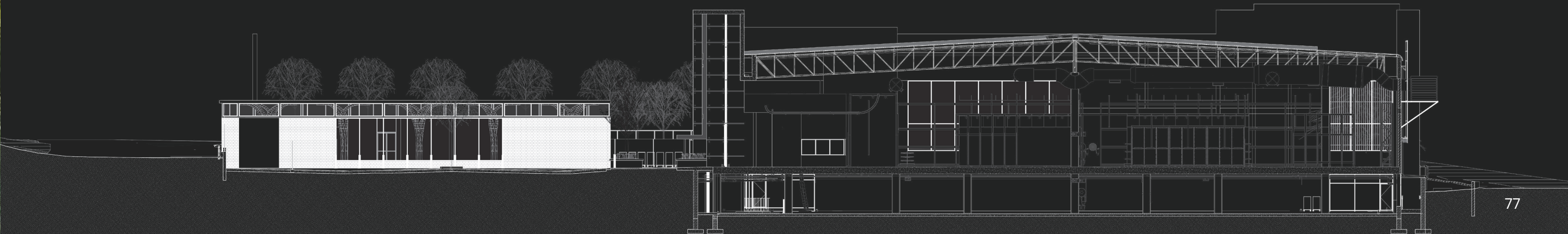


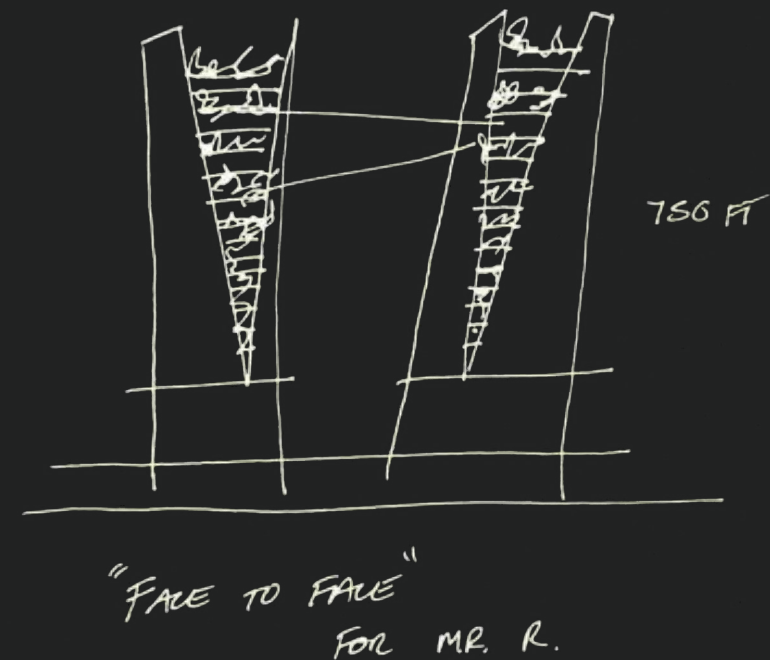
COMMERCIAL DEVELOPMENT PROPOSAL

Windhoek, Namibia

This commercial development redefines urban workspace design in Windhoek by integrating principles derived from modern airport terminals—expansive glass facades and soaring ceilings. The design embraces the philosophy of openness and transparency, ensuring a seamless connection between interior spaces and the natural environment. The fully glazed facade maximizes natural light, fostering a vibrant, sunlit atmosphere throughout the day.

Within, the greenified interior is a sanctuary of diverse plant life, strategically placed to stimulate productivity and well-being. The high ceilings and abundant greenery create an inspiring, uplifting environment, turning the workspace into a living, breathing entity that harmonizes with nature. This development stands as a testament to how contemporary architecture can blend functionality with biophilic design, setting a new standard for commercial spaces in Namibia.





ARTIFICIAL INTELLIGENCE IN ARCHITECTURE

The integration of Artificial Intelligence (AI) into the field of architecture marks a significant evolution in how we approach space-making. While AI is a powerful tool that enhances various aspects of the design process, it is essential to recognize that it will not replace human-centered design. The nuanced understanding that architects possess—the ability to design spaces that resonate with people emotionally, culturally, and socially—remains irreplaceable. Architects are trained to navigate the complexities of human behavior, cultural contexts, and environmental considerations, ensuring that the spaces we create are not only functional but also deeply meaningful to those who inhabit them.

At Pieter Mostert Architects, we are at the forefront of exploring AI's potential in architecture, particularly in the early conceptual stages of our projects. We are experimenting with AI to test material palettes, architectural concepts, and environmental design. AI's ability to process vast amounts of data and generate



AN APPROACH TO SPACE – MAKING

design alternatives quickly allows us to explore a wider range of possibilities, ultimately leading to more informed and innovative design decisions. For example, AI can assist in evaluating the environmental impact of different materials, helping us to make more sustainable choices from the outset of a project. It can also simulate various design scenarios, providing insights into how different architectural concepts might perform in real-world conditions.

One of the most intriguing aspects of our AI experimentation is the complexity of prompt engineering. This process involves crafting precise inputs that guide AI algorithms to generate relevant and creative outputs. The art and science of prompt engineering are critical, as the quality of the AI-generated results is highly dependent on the clarity and specificity of the prompts provided. By refining our approach to prompt engineering, we are able to harness AI's potential more effectively, allowing us to

explore new design directions that might not have been considered through traditional methods alone.

While AI is becoming increasingly valuable in the early conceptual and “look & feel” phases of our projects, it is important to emphasize that it is a tool that complements, rather than replaces, the architect's role. AI can generate ideas and suggest alternatives, but the final decisions on design direction, materiality, and spatial configuration rest with the architect. Our understanding of the subtleties of human experience, the importance of context, and the need for spaces that are both functional and inspiring ensures that AI remains a valuable assistant in the creative process, rather than the driver of design.





PHOTOGRAPH BY KEITH HARDY

SOSSUSVLEI DUNES

AI series – Namibian Landscapes

This architectural concept integrates seamlessly with the Sossusvlei desert landscape, mirroring the natural curves of the sand dunes through its flowing roofline and organic form. The design respects and celebrates the environment, using expansive glazing to reflect the desert's colors and offer unobstructed views. The building emerges naturally from the terrain, blending contemporary design with contextual sensitivity and highlighting the importance of responsive architecture in sensitive environments.



Image produced by PMA using AI and post production tools.



FISH RIVER CANYON

AI series – Namibian Landscapes

This architectural concept skillfully integrates with the dramatic cliffs of the Fish River Canyon, borrowing its massing from the natural forms and textures of the rock face. The structure seems to emerge organically from the canyon walls, blending modern design with the raw, rugged landscape. The use of expansive glass surfaces allows for uninterrupted views of the canyon, creating a seamless connection between the built environment and nature. The design respects the geological features, echoing the stratified layers of rock through its horizontal lines, and emphasizes a minimal footprint, highlighting the balance between human intervention and natural preservation. This approach exemplifies how architecture can be both a respectful addition to and a continuation of the landscape, celebrating the unique beauty of the Fish River Canyon.



Image produced by PMA using AI and post production tools.



WATERBERG RESERVE

AI series – Namibian Landscapes

This architectural design draws inspiration from the rugged terrain and rich biodiversity of the Waterberg Plateau in Namibia. The massing of the structure harmonizes with the jagged cliffs and natural rock formations, embedding itself into the landscape rather than dominating it. The horizontal lines of the building echo the plateau's stratified rock layers, creating a visual continuity between the built and natural environments.

The integration of greenery on the rooftop and surrounding areas further blurs the line between architecture and nature, enhancing the structure's connection to the lush vegetation that characterizes the Waterberg region. This design approach emphasizes minimal intrusion on the environment, allowing the architecture to become an extension of the landscape. By prioritizing materials and forms that resonate with the surrounding geology, the building serves as a model of how contemporary architecture can respectfully coexist with natural landmarks, celebrating the unique beauty of the Waterberg Plateau.



Image produced by PMA using AI and post production tools.

OTHER NOTABLE PROJECTS

Residential, Commercial, Mixed-Use

Beyond the projects we've showcased, our firm has been involved in a multitude of other significant developments and residences that reflect the breadth and depth of our architectural expertise. While confidentiality agreements and project sensitivities prevent us from disclosing every detail, we are eager to highlight a selection of these notable projects that exemplify our diverse capabilities and innovative approach.

Our portfolio extends beyond the public eye, encompassing a range of high-profile government buildings, educational institutions, and luxury residential complexes that have contributed to the urban and architectural fabric of their respective communities. Each project, whether large-scale or intimate in scope, has provided us with invaluable insights and opportunities to refine our design processes and solutions.

By sharing these projects, we aim to provide a deeper understanding of our firm's capabilities and the diverse range of challenges we are equipped to handle. Each project, whether publicly visible or not, reflects our ongoing pursuit of excellence and our dedication to advancing architectural practice through both creative exploration and technical mastery.



VF OFFICE
DEVELOPMENT

LUSAKA,
ZAMBIA





1921

Windhoek, Namibia

PROJECT TYPE:
Mixed-Use

SIZE:
500 sqm +

YEAR:
2024

DESCRIPTION:

Mixed-use development situated in Klein Windhoek. This structure required careful integration of new architectural elements with an existing building, in compliance with heritage protection laws. The use of steel, glass, and stone not only anchors the new structure to the site but also creates a harmonious contrast with the existing architecture, ensuring minimal disruption to the historical context.





BEACHFRONT DEVELOPMENT

Namibia

PROJECT TYPE:
Multi-Residential

SIZE:
1500 sqm +

YEAR:
2017

DESCRIPTION:

Situated along the Namibian coastline, this proposed beach development embodies the essence of luxurious coastal living. Designed to embrace the natural beauty of its surroundings, the development offers a collection of exclusive residential units, each meticulously crafted to provide unparalleled comfort and sophistication. Expansive floor-to-ceiling windows frame breathtaking ocean views, while private terraces and outdoor spaces invite residents to immerse themselves in the serene coastal atmosphere. With a focus on creating a vibrant community, the development features communal spaces and amenities designed to foster interaction and connection among its international and local residents.





HOCHLAND ESTATE

Windhoek, Namibia

PROJECT TYPE:
Multi-Residential Estate

SIZE:
2000 sqm +

YEAR:
2021

DESCRIPTION:

Crafted with meticulous attention to detail, this proposed housing development on the outskirts of Windhoek embodies the essence of modern living. Designed to harmonize with the natural landscape while offering unparalleled comfort and security, the project seeks to redefine the concept of community living. Our vision encompassed a diverse range of living units, each meticulously crafted to cater to the unique needs and aspirations of residents.



MONTANA HANGAR

Montana, USA

PROJECT TYPE:
Airline Hangar

SIZE:
500 sqm +

YEAR:
2020

DESCRIPTION:

The hangar was meticulously designed to accommodate modern aircraft with precision, ensuring functionality while maintaining a sophisticated aesthetic. The structure's robust exterior is matched by a sleek, spacious interior, optimized for both aircraft storage and maintenance. Large, strategically placed windows allow natural light to flood the space, reducing the need for artificial lighting and enhancing energy efficiency.



STONE SQUARE COMPLEX

Windhoek, Namibia

PROJECT TYPE:
Mixed-Use

SIZE:
500 sqm +

YEAR:
2011

DESCRIPTION:

The design features a series of interlocking volumes that create distinct yet interconnected spaces, offering flexibility for various office configurations. Natural light floods the interiors through expansive glass facades, which also frame views of the surrounding landscape, enhancing the working environment.



HOUSE IZ

Windhoek, Namibia

PROJECT TYPE:
Single Residential

SIZE:
300 sqm +

YEAR:
2021

DESCRIPTION:

Perched elegantly on a sloping site in Windhoek, this private residence embodies a harmonious blend with its natural surroundings. The architectural concept embraces the sloped terrain, creating terraced floors that seamlessly integrate indoor and outdoor living spaces. A striking pitched roof adds a sense of grandeur to the interiors, allowing for lofty ceilings that enhance the overall sense of spaciousness and airiness. The facade is a study in contemporary elegance, featuring pitched faces and horizontal timber slats that not only provide privacy but also serve as a functional element, shielding the interiors from the harsh Namibian sun.



B1 RESIDENCE

Longbeach, Namibia

PROJECT TYPE:
Mixed-Use

SIZE:
500 sqm +

YEAR:
2011

DESCRIPTION:

Overlooking the Atlantic Ocean, our client sought a courtyard design to shield them from the elements while preserving their view of the sea. By merging two erven, we created ample space for their family, including a large lawn, swimming pool, garden walkway, and off-street parking for four cars. A separate home office enhances work-life balance. Privacy was a key concern due to the proximity of surrounding properties; we achieved this by designing the outer shell to create a courtyard pocket between the kitchen, children's playroom, and main lounge area. Weather permitting, the house features a beachside firepit, strategically elevated for optimal views of passing ships en route to Walvis Bay Harbour.



SINDI LODGE

Namibia

PROJECT TYPE:
Game Lodge

SIZE:
300 sqm +

YEAR:
2022

DESCRIPTION:
The Sindi Lodge Main building, designed for Schalk Pienaar Safari's, situated in the eastern parts of Namibia's savannahs. The architecture integrates tactile materials and textures that harmonize with the surrounding built and natural environment. The building features pitched roofs, adding a distinctive architectural element to the design.



ANGOLA CABIN

Angola

PROJECT TYPE:
Multi-Residential

SIZE:
80 sqm +

YEAR:
2022

DESCRIPTION:
Nestled amidst the serene wilderness of Angola, our bush cabin redefines rustic elegance. With its distinctive pitch roof design, this architectural marvel seamlessly blends into the natural landscape, offering a harmonious retreat for eco-conscious adventurers. From its panoramic windows that frame breathtaking views of the surrounding wilderness to its cozy interior adorned with handcrafted furnishings, every detail reflects our reverence for both nature and design.



NEDBANK PROPOSAL

Namibia

PROJECT TYPE:
Banking

SIZE:
500 sqm +

YEAR:
2019

DESCRIPTION:

The Nedbank proposal in Windhoek envisions a modern, sustainable building that reflects the bank's progressive identity. It features contemporary design, energy-efficient technologies, and integrates green spaces and natural light. The proposal aims to set a new standard for corporate architecture in Windhoek, blending functionality with environmental consciousness.



HOTEL EUROPAHOF

Namibia

PROJECT TYPE:
Hotel

SIZE:
1000 sqm +

YEAR:
2024

DESCRIPTION:

Hotel Europahof in Swakopmund is a revival of a historic landmark that intertwines modern luxury with rich cultural heritage. The design approach respects the building's original architectural language while incorporating contemporary elements to enhance its functionality and appeal. By preserving key historic features, such as its façade and spatial organization, the renovation ensures the hotel retains its authentic character. At the same time, modern interventions create a seamless blend between old and new, providing guests with a unique experience that honors the past while embracing the present. The hotel serves as a testament to Swakopmund's colonial history and architectural legacy, offering a bridge between the town's heritage and its future.



GRAND NAMIBIA

Windhoek, Namibia

PROJECT TYPE:
Commercial Office

SIZE:
400 sqm +

YEAR:
2019

Description:

Grand Namibia, a well established firm of accountants and auditors approached PMA with the intent of refurbishing their company profile.

Located in Windhoek West the building finds itself in a relatively older residential extension of the city. During the initial design development, PMA took the approach of remaining sensitive in relation to the street language and patterns. The building was rotated to a north facing façade for greater sun control, whilst embracing the view of the CBD. This design gesture breaks away from the existing repetition within the street typology to emphasize the new intervention in this street context.



NAMIBIAN EMBASSY

Lusaka, Zambia

PROJECT TYPE:
Embassy

SIZE:
400 sqm +

YEAR:
2019

DESCRIPTION:

The Namibian Embassy in Lusaka, Zambia, serves as a diplomatic outpost representing Namibia's interests in Zambia. Embassies like this one are vital hubs for diplomacy, facilitating communication and cooperation between nations. Located in the heart of Lusaka, the embassy provides a space for officials to conduct diplomatic affairs, issue visas, and support Namibian citizens living or traveling in Zambia. This project reflects our dedication to designing functional and culturally significant spaces that serve important societal functions.



RADIANCE TOWER

Namibia

PROJECT TYPE:
Commercial Office

SIZE:
14 000 sqm +

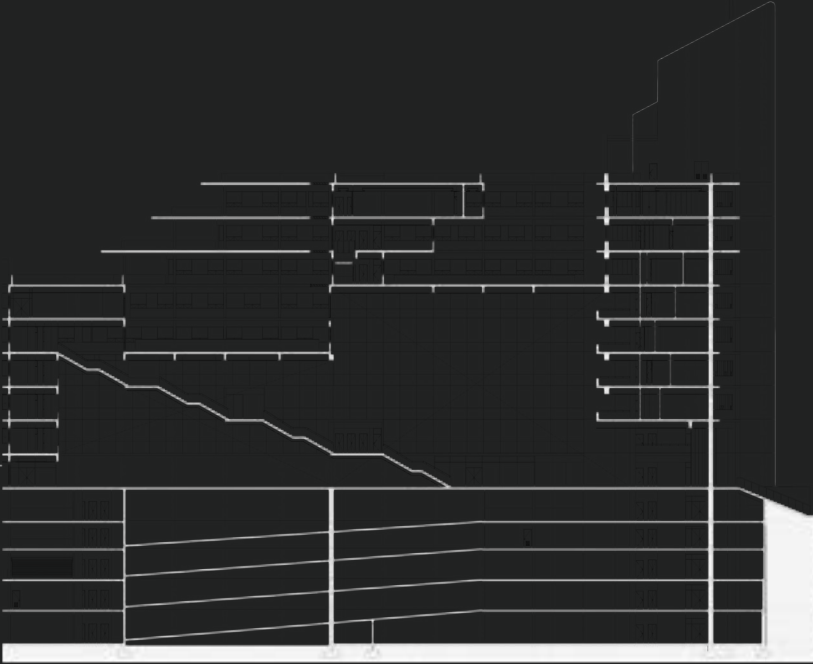
YEAR:
2016

Description:

A proposed commercial development, this unbuilt project represented a progressive vision of urban design, aspiring to redefine the city's skyline. Conceived as a modern landmark, the design embraced sleek, aerodynamic forms and dynamic verticality, reflecting the aspirations of a rapidly growing urban environment.

A key feature of the façade was the perforated screens, which served both aesthetic and functional purposes. These screens were meticulously designed to filter the intense Namibian sunlight, significantly reducing heat gain within the building's interior, thereby enhancing comfort and energy efficiency.

As our practice has evolved and our portfolio expanded, it is valuable to reflect on the journey we have undertaken and the projects that have shaped our trajectory. The insights gained from past proposals continue to inform our current work, as we look forward to contributing to Namibia's architectural future with renewed vision and expertise.



NAMIBIAN NATURE ESTATE

Namibia

PROJECT TYPE:
Nature Estate

SIZE:
400 sqm +

YEAR:
2024

Description:

This residential nature estate in Namibia features four distinct unit variations designed to harmonize with the natural landscape while offering contemporary living. The architecture combines strong geometric forms with natural materials and expansive glazing, emphasizing connection to the outdoors. Each unit caters to different lifestyles with open-plan living, private retreats, and sustainable design elements such as passive solar orientation and natural ventilation. The project seamlessly blends modern comforts with Namibia's rugged beauty, creating a tranquil yet environmentally responsible living environment.



HOUSE HALUDILU

Windhoek, Namibia

PROJECT TYPE:
Single Residential

SIZE:
400 sqm +

YEAR:
2024

Description:

This residence, designed for a family of four, prioritizes privacy from the street while maintaining interior permeability. The architectural concept includes a refined interior palette featuring light colors and warm timber flooring, creating an inviting and sophisticated living environment.



NAMIBIAN & INTERNATIONAL PROJECTS

Figures in N\$ Million.

PRIVATE RESIDENTIAL

Private House Menongue Angola	NAD 95M
House Haikali	NAD 25M
House Rotcher	NAD 18M
Villa Luanda Angola	NAD 12M
Okahanja Private	NAD 12M
Cape Town Residence	NAD 8M
Farm-House Louw	NAD 7M
Kalahari Farmhouse	NAD 5M
Omeya Houses	NAD 15M
Finkenstein Houses	NAD 51M
Herbothsblick Houses	NAD 12M
House Ahrens	NAD 7M
House Ahrens 2	NAD 4M
House Mathews	NAD 7M
Longbeach Residence	NAD 8M
House Visser Auasblick	NAD 7M
House Louw	NAD 6M
Luxury Hill House Barry	NAD 7M
House Van Rensburg	NAD 5M
House Spath	NAD 6M
House Machado	NAD 8M
Omaruru Lifestyle Estate Houses	NAD 8M
House Thompson Finkenstein	NAD 7M
House Gradtke Finkenstein	NAD 18M
House Waldschmidt	NAD 15M
Viana Luanda House	NAD 12 M
Mile 4 Beachfront House	NAD 7M
House Joffe	NAD 7M
Cheetah Foundation	NAD 6M
Kalahari Farmhouse	NAD 6.5M
House Burger Long Beach	NAD 8M
House Isaaks	NAD 7M
House Haitamba	NAD 9.5M
House Haludilu	NAD 8M
House Capelao	NAD 5M
House Shaanika	NAD 8M
House Fourie Henties	NAD 8.5M
Zitzmann – Ruspunt Villa	NAD 46M
House Nkoshi	NAD 16M
Mareewil Farmhouse	NAD 8M
House Ferreira	NAD 24M
Villa 47	NAD 14M

HOUSING DEVELOPMENTS

OKATJORUTE ESTATE	NAD 75M
RESIDENTIAL UNITS CAYMEN ISLANDS USA	NAD 120M
TWIN HILLS – OSIRE	NAD 70M
LEOPARD RIDGE GOLF ESTATE	NAD 195M
GAMSA HILLS	NAD 18M
EENHANA HOUSING DEVELOPMENT	NAD 80M
OKAHANKA RESIDENTIAL	NAD 24M
AVIS DEVELOPMENT	NAD 18M
120 LOW COST UNITS – SOUTHERN NAMIBIA	NAD 60M
OSHONA VILLAGE DEVELOPMENT	NAD 70M
WESTRIDGE DEVELOPMENT	NAD 150M
BEACHBREAK SWAKOPMUND	NAD 210M
ERF 400 WINDHOEK	NAD 40M
LUXURY GOLF ESTATE DEVELOPMENT	NAD 210M
VENAANI RESIDENTIAL	NAD 12M
AUAS HILLS	NAD 7M
140 OMEYA – BATELEUR	NAD 35M
JEDIDJA KLEINE KUPPE	NAD 85M
NEXUS ELISENHEIM	NAD 27M
RUNDU STR 5 – NEXUS	NAD 24M
OSHONA VILLAGE	NAD 17M
BALACLAVA DEVELOPMENT MAURITIUS STAGE 1	NAD 180M

HOTELS & LODGES

BARKAN LODGE	NAD 5M
HUAMBO HUNTING CHALETs	NAD 8M
QUIVER INN KEETMANSHOOP	NAD 7M
SINDI LODGE	NAD 8.5M
MOKUTI CHALETs & ROOMS	NAD 74M
PQ BOUTIQUE HOTEL	NAD 85M
EUROPAHOF SWAKOPMUND	NAD 18M
SAURIMO ANGOLA PROPOSAL	NAD 200M
RADISSON KLEINE KUPPE	NAD 230M
AUAS HOTEL PROPOSAL	NAD 185M
EROS GUESTHOUSE	NAD 9M
GROSS BARMAN RESORT	NAD 140M
BERVELD LODGE	NAD 17M
KOWAS LODGE 4 STARS	NAD 24M
KOWAS LODGES 5 STARS	NAD 30M
SOSUSSVLEI LODGES PROPOSAL	NAD 59M
FARM BERGFELD	NAD 14M

COMMERCIAL OFFICE BUILDINGS

FELDSTREET OFFICE DEVELOPMENT	NAD 9M
RIEKs OFFICE DEVELOPMENT	NAD 18M
EXTENSION & UPGRADE JUSTICE BUILDING WHK	NAD 126M
GRAND NAMIBIA	NAD 8M
LAZARETT STREET	NAD 18M
STONE SQUARE	NAD 22M
PROSECUTOR GENERAL HEAD OFFICE	NAD 350M
ATTORNEY GENERAL OFFICE COMPLEX	NAD 300M
TRUSTCO WALVIS BAY	NAD 5M
BAGLAKHADI OFFICE – REGIONAL & LOCAL GRN	NAD 14M
KEETMANSHOOP MUNICIPALITY	NAD 3M
B1 CITY OFFICE PROPOSAL	NAD 44M
ORYX PROPERTIES – HEAD OFFICE	NAD 2M
LITHON CONSULTING ENGINEERS	NAD 5M
ILAMO BUILDING	NAD 20M
1921 RESTAURANT & OFFICES	NAD 18M
PMA OFFICES	NAD 7M
KAISERKRONE A&A	NAD 2.5M

SHOPPING CENTERS

KLEINE KUPPE MIXED USE	NAD 40M
NORTHERN NAMIBIA	NAD 200M
KLEINE KUPPE OFFICE, RETAIL, HOTEL PROPOSAL	NAD 530M
KHOMAS GROVE – WINDHOEK	NAD 63M
COMMERCIAL PODS	NAD 3.2M
VILLAGE PLAZA FEASIBILITY	NAD 300M
TSANDI WHOLESALE	NAD 6M

HOSPITALS & MEDICAL

ANGOLAN PHARMACIES	NAD 24M
I-CARE MEDICAL CAMPUS	NAD 34M
BEL ESPRIT MENTAL HEALTH HOSPITAL & SECONDARY	NAD 124M
GENERAL HOSPITAL PROPOSAL OLYMPIA	NAD 450M

COMMERCIAL BANKING

MMI REBRAND WINDHOEK & NORTH	NAD 45M
NEBANK BRANCH REDESIGN & RENOVATION	NAD 35M
TELECOM REDESIGN & RENOVATION	NAD 7M
NEDBANK ONGWEDIVA	NAD 3M
FNB HEAD OFFICE WINDHOEK	NAD 14M
NEDBANK WESTLANE	NAD 3M
ATLANTICO BANK PROPOSAL	NAD 4M
NEDBANK INDEPENDENCE	NAD 7M
NEDBANK ONDANGWA	NAD 2M
TELECOM GROVE MALL / INDEPENDENCE	NAD 9M
METHEALTH	NAD 2M

INDUSTRIAL & SHOWROOMS

SOUTH AFRICAN BREWERIES – OKAHANJA	NAD 58M
DIESEL STREET SHOWROOMS	NAD 54M
KEETMANSHOOP TOYOTA & WORKSHOP	NAD 7M
TOUCH OF STYLE – BALLOT STREET	NAD 11M
FOSTER DEVELOPMENT KEETMANSHOOP	NAD 15M
AROAB FIRE STATION	NAD 5M
KEETMANSHOOP FIRE STATION	NAD 6M
MORSE INVESTMENT – JEWELRY & FACTORY	NAD 17M
TOTAL OSHAKATI	NAD 11M
RADIOWAVE WHK WEST	NAD 3M
RADIOWAVE NEW STUDIOS & OFFICES	NAD 7M
B1 PETROPORT DEVELOPMENT	NAD 32M
TOYOTA KEETMANSHOOP	NAD 6M
ZEBRA TRAILERS SHOWROOM	NAD 5M
ALS LABORATORIUM	NAD 7.8M
TELECOM WHK / AUSENKEHR	NAD 2.5M
PUPKEWITZ MEGABUILD LIFESTYLE	NAD 104M

EMBASSY &

HIGH COMMISIONS

LUSAKA ADDITIONS & ALTERATIONS – NAM	NAD 28M
MIRCO WAREHOUSE	NAD 5M
OFFICE BLOCK & APARTMENTS – RUSSIAN	NAD 54M
NAMIBIAN EMBASSY – USA, WASHINGTON DC	NAD 22M

UNIVERSITIES & SCHOOLS

LEONARDVILLE DINING HALL	NAD 2.5M
OMBUUMBU SCHOOL – RUACANA	NAD 1.8M
WINDHOEK INTERNATIONAL SCHOOL	NAD 32M
NEW LUDERITZ PRIMARY SCHOOL	NAD 11M
NEW SAURIMO PRIMARY & SECONDAY SCHOOL	NAD 120M
UNAM ENGINEERING & INFORMATION TECH PH1	NAD 115M
UNAM ENGINEERING & INFORMATION TECH PH2	NAD 136M
UNAM ENGINEERING & INFORMATION TECH PH3	NAD 185M
UNAM HOSTELS & CAFETERIA	NAD 95M
OPUWO MULTI-PURPOSE YOUTH CENTER	NAD 28M
UNAM MULTI-PURPOSE RESOURCE CENTER	NAM 85M
CONFUCIUS BUILDING UNAM – WHK CAMPUS	NAD 205M

SPORTS FACILITIES

NAMIBIA FIA-CIK KARTING PROPOSAL	NAD 30M
NEW UPGRADE PROPOSAL FOR H.G. STADIUM	NAD 50M
7000sqm MULTI-PURPOSE SPORTS SHOWGROUND	NAD 14M
BOWLING ALLEY – KHOMAS GROVE	NAD 9M
RUGBY UNION NAMIBIA PROPOSAL	NAD 23M
UNAM MULTI-FUNCTIONAL SPORTS HALL PROPOSAL	NAD 183M

UNIVERSITIES & SCHOOLS

LEONARDVILLE DINING HALL	NAD 2.5M
OMBUUMBU SCHOOL – RUACANA	NAD 1.8M
WINDHOEK INTERNATIONAL SCHOOL	NAD 32M
NEW LUDERITZ PRIMARY SCHOOL	NAD 11M
NEW SAURIMO PRIMARY & SECONDAY SCHOOL	NAD 120M
UNAM ENGINEERING & INFORMATION TECH PH1	NAD 115M
UNAM ENGINEERING & INFORMATION TECH PH2	NAD 136M
UNAM ENGINEERING & INFORMATION TECH PH3	NAD 185M
UNAM HOSTELS & CAFETERIA	NAD 95M

AVIATION

SHINING MOUNTAIN HANGAR – MONTANA USA	NAD 18M
EROS HANGARS 1 & 11	NAD 1.8M
SOLITAIRE HANGAR	NAD 5M
WFTC HANGAR	NAD 15M

DATA & SECURITY

DATA CONTINUITY NAMIBIA	NAD 185M
BYTES NAMIBIA	NAD 3.5M
ITN HEAD OFFICE	NAD 5M

PRISONS & SECURITY CENTERS

GOBABIS MEDIUM SECURITY CENTER	NAD 18M
EVARISTUS SHIKONGO MEDIUM SECURITY TSUMEB	NAD 142M

HONOURABLE MENTIONS

At Pieter Mostert Architects, the strength of our design output is deeply rooted in the expertise and dedication of our design team. Each member brings a unique set of skills and perspectives, enabling us to craft innovative and tailored solutions that meet the varied needs of our clients. Our team is not merely a collection of professionals; it is a dynamic group of thinkers, designers, and problem-solvers who work collaboratively to push the boundaries of what architecture can achieve.

Our architectural services span every stage of the construction process, from the initial concept through to the final completion. This comprehensive approach ensures that our designs are not only aesthetically compelling but also technically sound and contextually appropriate. Our team's diverse backgrounds and international experience allow us to draw on a wide range of influences and techniques, enriching our projects with a global perspective while

OUR LEADING DESIGNERS

maintaining a deep understanding of local contexts. The diversity within our team is a key factor in our success. Our architects and technologists hail from various regions across Southern Africa, bringing with them specialized knowledge that enhances our collective ability to innovate. This blend of expertise has enabled us to deliver award-winning projects that stand as testaments to our leadership in architectural innovation, both within Namibia and on the global stage. Our commitment to quality and excellence is reflected in every project we undertake, as we continue to set new standards in design and construction.

Our approach to architecture is holistic, integrating design with functionality while maintaining a strong sensitivity to the environments in which we build. The synergy within our team allows us to address complex challenges with creativity and precision, ensuring that each project not only meets but exceeds the expectations of our clients. As we continue to evolve,

we remain dedicated to fostering a culture of innovation, where every team member is encouraged to contribute their unique insights and ideas.

In an increasingly interconnected world, our team's ability to navigate both local and global landscapes is indispensable. The projects we have completed across various countries are a testament to our adaptability and our commitment to delivering world-class architectural solutions. Whether we are working on a large-scale commercial development or a bespoke residential project, our team's collective expertise ensures that we are always at the forefront of architectural practice, setting benchmarks for others to follow.



D1
VILLA | WINDHOEK,
NAMIBIA



Pieter Mostert

Principal & Professional Architect

- Private Pilot License 43 Air School 1991
- B. Arch. UFS 1996
- B. Arch. Stud (Honours) 1997
- R. Arch. NCAQS MNIA
- AIT & Principal Architect Claud Bosch Architects 1998-2002
- Founded PMA 2002
- Incorporated Katrin Vaatz Architects with PMA 2015
- Established PMA Mauritius 2022
- 27 Years of experience working across multiple countries

During his studies at the University of the Free State (UOFS) under the mentorship of Professor Jan Smit, Pieter Mostert gained valuable experience working with various architectural firms over a period of five years. Upon obtaining his degree, Pieter joined Claud Bosch Architects as an Architect-in-Training (AIT) and achieved professional qualification as an architect in 1999, graduating cum laude. His 17 years of architectural experience are marked by his involvement in a diverse range of projects, including hospitals, lodges, shopping centers, and both residential and commercial developments, with projects collectively valued at over N\$ 500 million.

In 2002, Pieter established Pieter Mostert Architects, where his leadership and vision propelled the firm to international recognition. The firm forged significant connections with the African Union of Architects and the Commonwealth Association of Architects, expanding its influence with projects across Angola, Zambia, South Africa, and Equatorial Guinea, and receiving inquiries from as far afield as Israel, Portugal, and France.



Brendon Bowles

Professional Architect & Office Principal

- Dip. Architectural Technology NMU
- B. Tech. Architectural Technology NMU
- M. Arch. Port Elizabeth NMU
- 10+ Years of experience

Brendon Bowles brings a wealth of experience and leadership to our team. Originally from the Eastern Cape of South Africa, Brendon migrated to Namibia in 2016, where he has since made significant contributions to the architectural landscape. His journey in architecture began with internships at DMV Architecture, Imbono FJA Architects, and Thembela Architects in Port Elizabeth. He later took on a partner role at In Plan Architectural Services and served as a project architect with Barnard Mutua Architects in Windhoek. Brendon's expertise further expanded when he coordinated the architectural aspects of the U.S. Embassy project in Windhoek with BL Harbert. Since joining Pieter Mostert Architects in March 2022, Brendon's diverse background and dedication to his craft have been instrumental in shaping the direction and success of our studio. His ability to connect with colleagues from various backgrounds, influenced by his upbringing and professional challenges, underscores his commitment to leadership and architectural excellence.



Edmond Muparadzi

Senior Architectural Technologist & Project Manager

- National Diploma in Architectural Technology
Harare Polytechnic
- National Intermediate Diploma in Architecture
- Commonwealth Association of Architects
- 27+ Years of experience

Edmond brings over 27 years of extensive experience in the field of architecture, having honed his skills through a diverse portfolio of projects, including those for the Government, the University of Namibia (UNAM), the Polytechnic of Namibia, as well as various private developments. Throughout his career, Edmond has been entrusted with key responsibilities, such as the production of sketch designs, the development of presentation and working drawings, and the orchestration of site meetings and inspections. His expertise also extends to the preparation of payment certificates and the critical tasks of project coordination and management.

Edmond's professional journey includes significant tenures at prominent architectural firms. From 2004 to 2005, he contributed his skills at Kerry McNamara Architect, followed by a substantial period from 2005 to 2013 at Katrin Vaatz Architect. In 2013, Edmond joined Pieter Mostert Architects as a Senior Architectural Technician, where he continues to play an instrumental role in the firm's success.



Henk Malherbe

Candidate Architect & Media Manager

- B.A. Visual Communication Design – The
Stellenbosch Academy of Design and
Photography
- B. Arch. – University of Cape Town
- Certificate in Property Development and
Investment – University of Cape Town
- B. Arch. Honours – University of Cape Town
- M. Arch. (Professional) – University of Cape Town
- 3+ years of experience

Henk began his academic journey in Visual Communication Design at the Stellenbosch Academy of Design and Photography, where he distinguished himself by winning a Loerie Award in his final year and being named a Pendorring finalist in South Africa.

Following his graduation as an Art Director, Henk pursued a degree in Architecture at the University of Cape Town, where he balanced his studies with professional experience at a South African architecture firm. During this time, he contributed to the design of luxury residential projects along the West Coast and was involved in larger governmental initiatives.

In his final year of the Master of Architecture program, Henk's academic excellence was recognized through his nomination to the Golden Key International Honour Society, placing him in the top 15% of his faculty. Upon completing his studies, Henk relocated to Windhoek, Namibia, where he joined Pieter Mostert Architects. As a registered Architect-in-Training (AIT), Henk continues to apply his diverse design background and architectural expertise to contribute to the firm's innovative projects.



Adriaan Haak

Senior Architectural Technologist & Project Manager

- B. Tech. Architectural Technology CPUT
- IIE Higher Certificate in Construction and Engineering Drafting
- 10+ Years of experience

Adriaan Haak brings a wealth of experience and expertise to the firm, with a career spanning over a decade in both South Africa and Namibia. Adriaan earned his National Degree in Architectural Technology from the Cape Peninsula University of Technology and is a registered professional with the South African Council for Architectural Professionals (SACAP). His technical acumen is further enhanced by advanced training in Autodesk Revit, a critical tool in modern architectural design. Adriaan's portfolio is marked by his involvement in a wide range of projects, including the development of new residential, commercial, and industrial facilities. His recent work in Namibia includes significant projects such as a new housing complex in Okahandja and a warehouse facility in Kleine Kuppe. His prior experience in South Africa includes leading the design and implementation of the new terminal building at Cape Town International Airport and a mixed-use medical precinct in Malmesbury. Adriaan's commitment to excellence in architectural technology ensures that every project he undertakes is delivered with precision and attention to detail, making him an invaluable asset to the Pieter Mostert Argitek team.



Wikus Krugel

Senior Architectural Technologist & Office Manager

- National Diploma in Architectural Technology NMU
- 11+ Years of experience

Wikus Krugel brings over a decade of architectural experience, having worked across various companies in South Africa and Namibia between 2013 and 2016 before joining Pieter Mostert Architects. His expertise spans a broad range of projects, from residential developments, such as the Wild Olive and Henning Village townhouse complexes in Windhoek, to large-scale commercial endeavors like the MegaCentre shopping complex. Wikus also played a crucial role in the development of the Lady Pohamba Private Hospital, where he was an integral part of the technical team responsible for executing detailed technical documentation, conducting site inspections, and coordinating services.

At Pieter Mostert Architects, Wikus is entrusted with leading several diverse projects, including residential homes, townhouse complexes, office developments, and industrial buildings. His proficiency in AutoCAD, Revit, ArchiCAD, and various other essential design software programs underpins his ability to deliver precise and innovative architectural solutions. Wikus's comprehensive experience and technical acumen make him a key contributor to the firm's ongoing success in creating impactful and functional architectural spaces.



COMMERCIAL
DEVELOPMENT | WINDHOEK,
NAMIBIA

SIT DOWN WITH US

Our team at PMA is eager to work with like-minded clients who share our vision for architectural innovation and excellence. We are committed to creating spaces that not only meet the needs of our clients but also inspire and enrich the lives of those who inhabit them. By collaborating closely with our clients, we ensure that each project is a true reflection of their unique vision and aspirations.

ADDRESS:

Mauritius:

Hotel Avenue, 33 Cybercity,
Ebene, Mauritius

Namibia:

1 Simon Bolivar,
Klein Windhoek, Namibia

CONTACT:

+264 61 238 603

info@argitek.biz

www.pietermostertarchitects.com

From Namibia to the world.



www.pietermostertarchitects.com

